

New Functions for AutomationDesk

- **AutomationDesk 1.2 out now**
- **New interfaces**
- **More configuration options**

A new version of AutomationDesk, the test automation and test management software, is available with dSPACE Release 4.2. AutomationDesk 1.2 provides enhanced report generation and supports the automation of Softing's Diagnostic Tool Set (DTS7) and the integration of calibration and measurement tools such as CalDesk 1.1, the calibration software.

New Report Generation

Report generation has been reworked for AutomationDesk 1.2. The enhanced report generation feature revolves around a report library. This provides special blocks that can be placed at any desired points in the test phase to generate report entries. There are now also comprehensive setting options for configuring the contents and appearance of the report output. Report generation is still based on XML, so custom formats can easily be generated by means of style sheets.

DTS7 Integration

The new version adds a DTS7 library to AutomationDesk's proven support for DTS6. This means you can integrate and automate Version 7 of Softing's

Diagnostic Tool Set (DTS). Integration is based on the new ASAM-MCD 3 standard. The DTS7 library provides high-level functions especially for hardware-in-the-loop applications, so you do not have to worry about the details of complex ASAM-MCD 3 functions and objects.

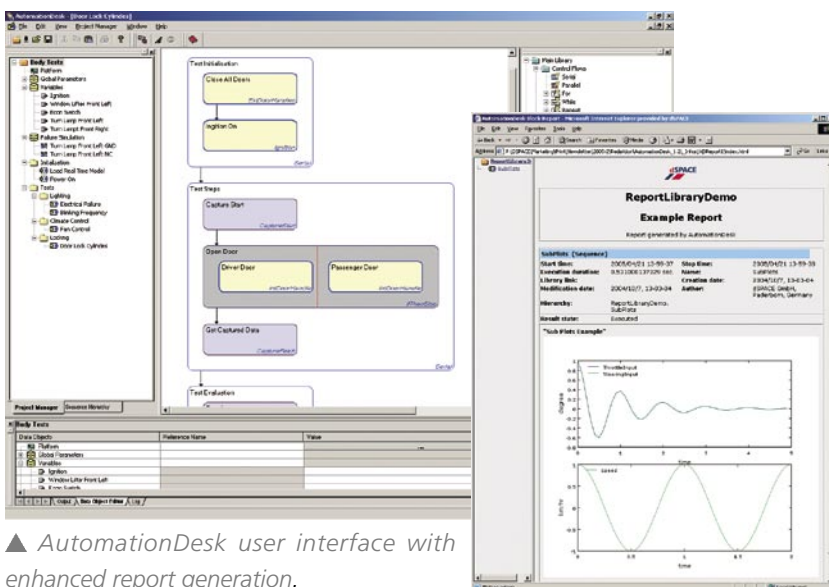
Remote Calibration via COM/DCOM

Previous versions of AutomationDesk already contained the Remote Calibration Library for connecting calibration and measurement systems via the serial interface and Ethernet, using the old ASAP3 standard. Now a new interface has been added. This is based on the current ASAM-MCD 3 standard and uses COM and DCOM. The advantages this brings include automation of CalDesk 1.1, the calibration software, in a HIL scenario, for read and write access to the internal variables of an electronic control unit. CalDesk can run on the same PC as AutomationDesk (via COM) or on a separate PC (via DCOM). The interface has also been tested successfully with other calibration and measurement tools, i.e., INCA from ETAS and CANape from Vector Informatik.

Further Innovations

There is a new data container for grouping data objects. This helps to design and organize large-scale projects more clearly in the Project Manager. The capture function in the Platform Access Library is now more flexible to handle. New tool properties mean that AutomationDesk's features can be adjusted even more closely to individual requirements.

AutomationDesk 1.2



AutomationDesk user interface with enhanced report generation.