

# New Features for ControlDesk

Version 2.8 of ControlDesk, the test and experiment software, allows different capture services to be synchronized to a global time base – useful for easy data comparison. Parameter sets can also be written to PPCs file without the need for recompilation.

- Synchronous data acquisition with global time base
- FlexRay support
- Direct update of parameter sets

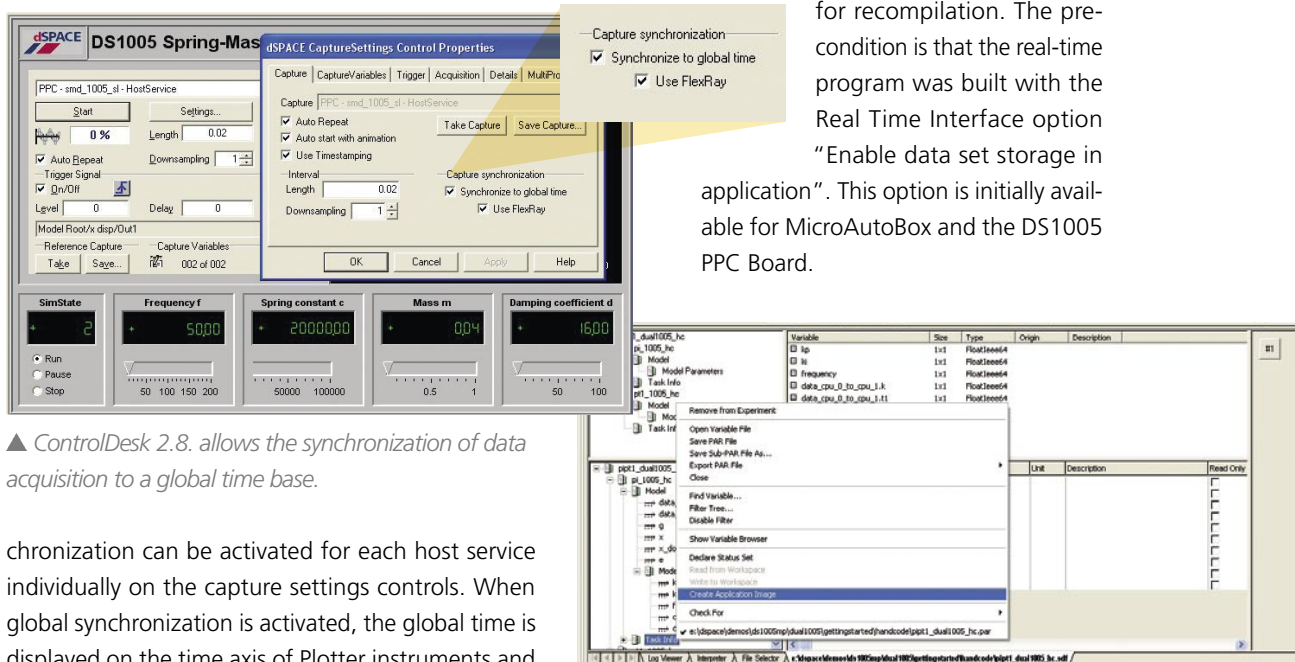
## Synchronous Data Acquisition

With ControlDesk 2.8, multiple data acquisitions can be synchronized to a global time, defined relative to the start of ControlDesk's Animation mode. The global time base makes it easy to compare data that is acquired by different capture services. Global syn-

## Direct Update of Parameter Sets ("Create Application Image")

With ControlDesk 2.8, the context menu of the parameter editor has a new item, "Create Application Image". This allows a parameter set to be written to

a PPC file without the need for recompilation. The precondition is that the real-time program was built with the Real Time Interface option "Enable data set storage in application". This option is initially available for MicroAutoBox and the DS1005 PPC Board.



▲ ControlDesk 2.8. allows the synchronization of data acquisition to a global time base.

chronization can be activated for each host service individually on the capture settings controls. When global synchronization is activated, the global time is displayed on the time axis of Plotter instruments and used as time stamps in streamed IDF files.

The synchronization feature uses the same algorithm as CalDesk, the measurement and calibration software, and achieves a precision of about 60 μs.

The precision of the global synchronization feature can be enhanced by factor 2 (to 30 μs) when the synchronized real-time systems are connected via FlexRay bus. In addition, signals from different capture services can be mixed in one single ControlDesk Plotter.

▲ You can write a parameter set to a PPC file without recompilation – using the new option "Create Application Image".

## Glossary

### PPC file –

The executable file that contains the simulation application.

### IDF file –

Intermediate data file generated by stream-to-disk data acquisition.

For details of the release date of ControlDesk 2.8 as part of dSPACE Release 5.1, see [www.dspace.com/goto?releases](http://www.dspace.com/goto?releases)