

dSPACE Installation Manager 24.1

Managing dSPACE Software Installations

Release 2024-A – May 2024

How to Contact dSPACE

Mail:	dSPACE GmbH Rathenaustraße 26 33102 Paderborn Germany
Tel.:	+49 5251 1638-0
E-mail:	info@dspace.de
Web:	https://www.dspace.com

How to Contact dSPACE Support

If you encounter a problem when using dSPACE products, contact your local dSPACE representative:

- Local dSPACE companies and distributors: <https://www.dspace.com/go/locations>
- For countries not listed, contact dSPACE GmbH in Paderborn, Germany.
Tel.: +49 5251 1638-941 or e-mail: support@dspace.de

You can also use the support request form: <https://www.dspace.com/go/supportrequest>. If you are logged on to mydSPACE, you are automatically identified and do not have to add your contact details manually.

If possible, always provide the serial number of the hardware, the relevant dSPACE License ID, or the serial number of the CmContainer in your support request.

Software Updates and Patches

dSPACE strongly recommends that you download and install the most recent patches for your current dSPACE installation. Visit <https://www.dspace.com/go/patches> for the software updates and patches themselves and for more information, such as how to receive an automatic notification when an update or a patch is available for your dSPACE software.

Important Notice

This publication contains proprietary information that is protected by copyright. All rights are reserved. The publication may be printed for personal or internal use provided all the proprietary markings are retained on all printed copies. In all other cases, the publication must not be copied, photocopied, reproduced, translated, or reduced to any electronic medium or machine-readable form, in whole or in part, without the prior written consent of dSPACE GmbH.

© 2011 - 2024 by:
dSPACE GmbH
Rathenaustraße 26
33102 Paderborn
Germany

This publication and the contents hereof are subject to change without notice.

AURELION, AUTERA, ConfigurationDesk, ControlDesk, MicroAutoBox, MicroLabBox, SCALEXIO, SIMPHERA, SYNECT, SystemDesk, TargetLink, and VEOS are registered trademarks of dSPACE GmbH in the United States or other countries, or both. Other brand names or product names are trademarks or registered trademarks of their respective companies or organizations.

Contents

About This Document	5
Introduction to dSPACE Installation Manager	7
Working with dSPACE Installation Manager.....	7
Working Without Administrator Rights.....	10
Working While a Restart Is Pending.....	12
Viewing Details of dSPACE Software Installations	15
How to View dSPACE Installations and Installed Products.....	15
Viewing Installed dSPACE Software Extensions (Add-ins, Solutions).....	18
Getting Information on Available dSPACE Software Updates	21
Basics on Getting Information on Available dSPACE Software Updates.....	21
How to Get Information on Available Software Updates Manually.....	24
Checking for Software Updates Periodically in the Background.....	26
Decrypting Encrypted Archives of dSPACE Software Installations	31
Basics on Decryption.....	31
How to Decrypt Encrypted Archives of dSPACE Software Installations.....	35
Activating and Deactivating dSPACE Installations	39
Basics on Activation/Deactivation.....	39
How to Activate a Single dSPACE Installation.....	42
How to Activate All Installations of a Specific dSPACE Release in One Step.....	43
Connecting dSPACE Installations to MATLAB	47
Introduction to Connecting a MATLAB Installation.....	47
Basics on Changing the Connection to MATLAB.....	50
How to Change the MATLAB Connection.....	52

Changing the Configuration of dSPACE Installations via Configuration File 55

- Basics on Working with Configuration Files 55
- Description of the Elements on the Configuration Dialog..... 58

Automating dSPACE Installation Manager via the API 63

- Introduction to the dSPACE Installation Manager API..... 63

Index 65

About This Document

Contents









This document shows you how to manage all the dSPACE installations on your host PC with dSPACE Installation Manager. Managing means, for example, activating or deactivating installations, decrypting the encrypted archives of the installed software and connecting dSPACE software installations to MATLAB® software.

Required knowledge

Knowledge in handling the host PC and the Microsoft operating system is required.

Symbols

dSPACE user documentation uses the following symbols:

Symbol	Description
	Indicates a hazardous situation that, if not avoided, will result in death or serious injury.
	Indicates a hazardous situation that, if not avoided, could result in death or serious injury.
	Indicates a hazardous situation that, if not avoided, could result in minor or moderate injury.
	Indicates a hazard that, if not avoided, could result in property damage.
	Indicates important information that you should take into account to avoid malfunctions.
	Indicates tips that can make your work easier.
	Indicates a link that refers to a definition in the glossary, which you can find at the end of the document unless stated otherwise.
	Follows the document title in a link that refers to another document.

Naming conventions

dSPACE user documentation uses the following naming conventions:

%name% Names enclosed in percent signs refer to environment variables for file and path names.

< > Angle brackets contain wildcard characters or placeholders for variable file and path names, etc.

Special Windows folders

Windows-based software products use the following special folders:

Common Program Data folder A standard folder for application-specific program data that is used by all users.

`%PROGRAMDATA%\dSPACE\`

or

`%PROGRAMDATA%\dSPACE\`

Documents folder A standard folder for application-specific files that are used by the current user.

`%USERPROFILE%\Documents\dSPACE\`

Local Program Data folder A standard folder for application-specific program data that is used by the current user.


`%USERPROFILE%\AppData\Local\dSPACE\`

Accessing dSPACE Help and PDF files

After you install and decrypt Windows-based dSPACE software, the documentation for the installed products is available in dSPACE Help and as PDF files.

dSPACE Help (local) You can open your local installation of dSPACE Help:

- On its home page via Windows Start Menu
- On specific content using context-sensitive help via **F1**

PDF files You can access PDF files via the  icon in dSPACE Help. The PDF opens on the first page.

dSPACE Help (Web) Independently of the software installation, you can access the Web version of dSPACE Help at <https://www.dspace.com/go/help>.

To access the Web version, you must have a *mydSPACE* account.

For more information on the mydSPACE registration process, refer to <https://www.dspace.com/faq?097>.

Introduction to dSPACE Installation Manager

Objective dSPACE Installation Manager handles all the dSPACE installations available on your host PC and provides detailed information, for example, on properties and installed products.

Where to go from here

Information in this section

Working with dSPACE Installation Manager.....	7
Working Without Administrator Rights.....	10
Working While a Restart Is Pending.....	12

Working with dSPACE Installation Manager

Purpose dSPACE Installation Manager lets you manage all the dSPACE installations on your host PC. For example, it supports connecting a dSPACE installation to MATLAB® software, provides license management, and has a diagnostics feature that collects information on your installation for you to send to dSPACE Support if necessary.

dSPACE Installation Manager is installed automatically during dSPACE software installation.

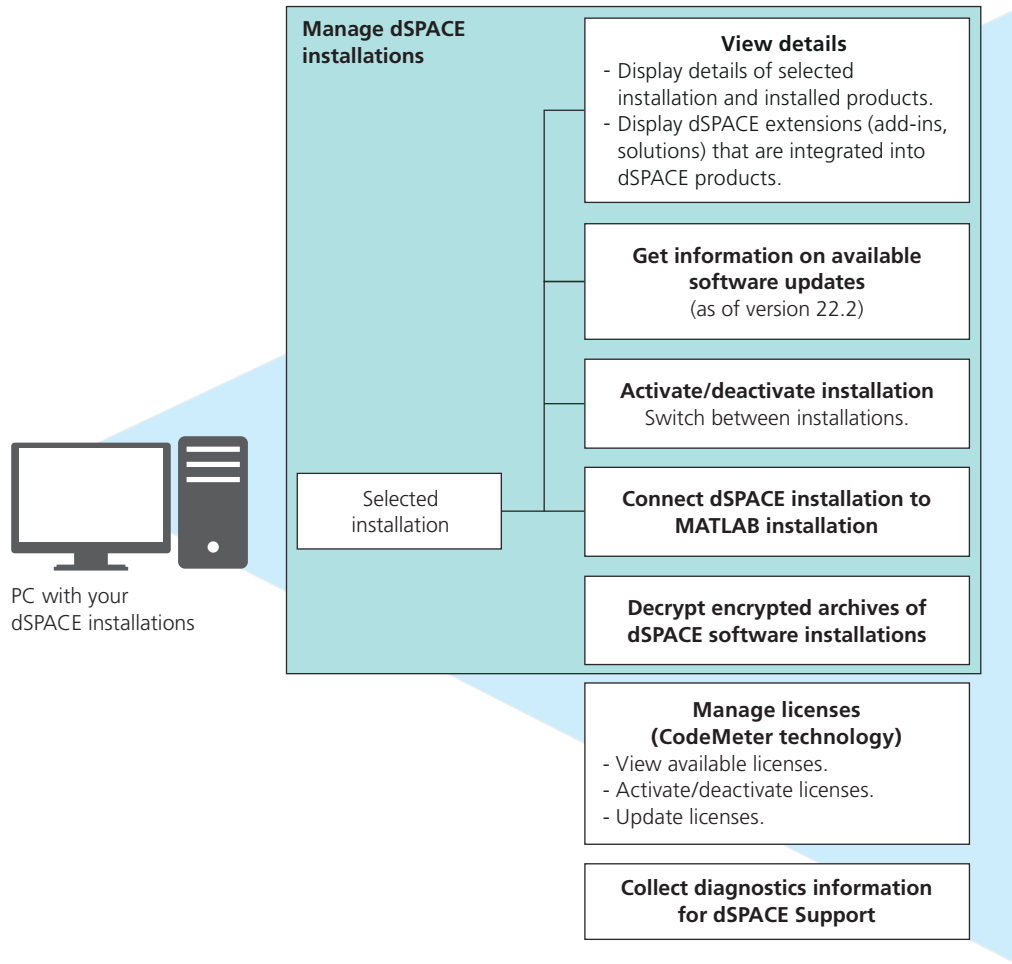
Restriction

Note

You cannot use dSPACE Installation Manager to install dSPACE software or modify dSPACE installations (add/remove software products) on your host PC. Use dSPACE Setup for installing additional software components instead.

Features

The following illustration provides an overview of the features of dSPACE Installation Manager:



Viewing details You can use dSPACE Installation Manager to get an overview of all available dSPACE software installations and details on installed products. Refer to [Viewing Details of dSPACE Software Installations](#) on page 15.

Getting information on available dSPACE software updates dSPACE Installation Manager can check and display whether an update (such as a patch) is available for your installed dSPACE software. This can be done manually or automatically. In the latter case, dSPACE Installation Manager uses notifications to inform you if an update is available.

dSPACE Installation Manager can check whether there are updates for the installations on your local PC or whether there are updates for installations on other PCs using an imported XML configuration file.

Refer to [Getting Information on Available dSPACE Software Updates](#) on page 21.

Activating a dSPACE installation One of the installations of each dSPACE software product is the *active installation*. If your system contains more than one installation (from different Releases or multiple instances of the same Release),

you can activate another installation manually. The previous active installation is then deactivated automatically. You can also deactivate the *active installation* manually without activating another one.


Tip


Not every dSPACE software product needs to be activated before use. For example, this function is not available for installations of TargetLink and Model Compare.

The effects of activating a dSPACE installation depend on the software product. For details, refer to [Activating and Deactivating dSPACE Installations](#) on page 39.

Connecting dSPACE installation to MATLAB dSPACE Installation Manager provides an easy way to connect your dSPACE installations (that require working with MATLAB) to a MATLAB installation. All the available MATLAB installations on your host PC and their integration states are listed. For more information, refer to [Connecting dSPACE Installations to MATLAB](#) on page 47.

Decrypting encrypted archives of dSPACE installations Specific parts of the dSPACE software, the documentation, demo models, and .NET code are installed in encrypted archives on the end user's PC. To use and to work with them, you have to decrypt the encrypted archives of the installed products. Refer to [Decrypting Encrypted Archives of dSPACE Software Installations](#) on page 31.

Managing licenses (CodeMeter technology) dSPACE Installation Manager helps you manage the licenses required for using dSPACE products, for example, to activate licenses. As of dSPACE Release 2017-B, it supports the CodeMeter licensing technology. For more information, refer to [Working with CodeMeter Licensing Technology](#) .

Getting diagnostics information for contacting dSPACE Support dSPACE Installation Manager collects information about the dSPACE software environment on your PC and saves it to a ZIP file. This you can send to the dSPACE Support for diagnostic purposes. For more information, refer to [Providing Diagnostic Information](#) .

Required user rights

To activate or to deactivate a dSPACE installation and to integrate dSPACE software into a MATLAB installation, you need administrator rights.

Working in restricted mode

Several actions lead to restrictions. In this case, you can use only a subset of the features of dSPACE Installation Manager. Depending on the actions you performed in the Installation Manager, restrictions can differ. dSPACE Installation Manager informs you about restricted mode as well as the actions and features you cannot use.

For more information on two scenarios for working with restricted Installation Manager functionality, refer to:

- [Working Without Administrator Rights](#) on page 10
- [Working While a Restart Is Pending](#) on page 12

Required versions

The required version of dSPACE Installation Manager depends on the latest version of dSPACE software installed on your system.

- As of dSPACE Release 2024-A, you have to use at least dSPACE Installation Manager 24.1. This version is provided with dSPACE Release 2024-A.
- dSPACE Installation Manager is downward-compatible with the last eight dSPACE Releases. So you can always use its latest version to manage the installations on your host PC. However, some features which are necessary to manage earlier dSPACE Releases are available only for those installations which require the specific feature.

You can download the most recent version of dSPACE Installation Manager from <http://www.dspace.com/go/imupdate>.

Downgrading dSPACE Installation Manager For various reasons it may be necessary to downgrade dSPACE Installation Manager. For the required steps, refer to the following FAQ <http://www.dspace.com/faq?363>.

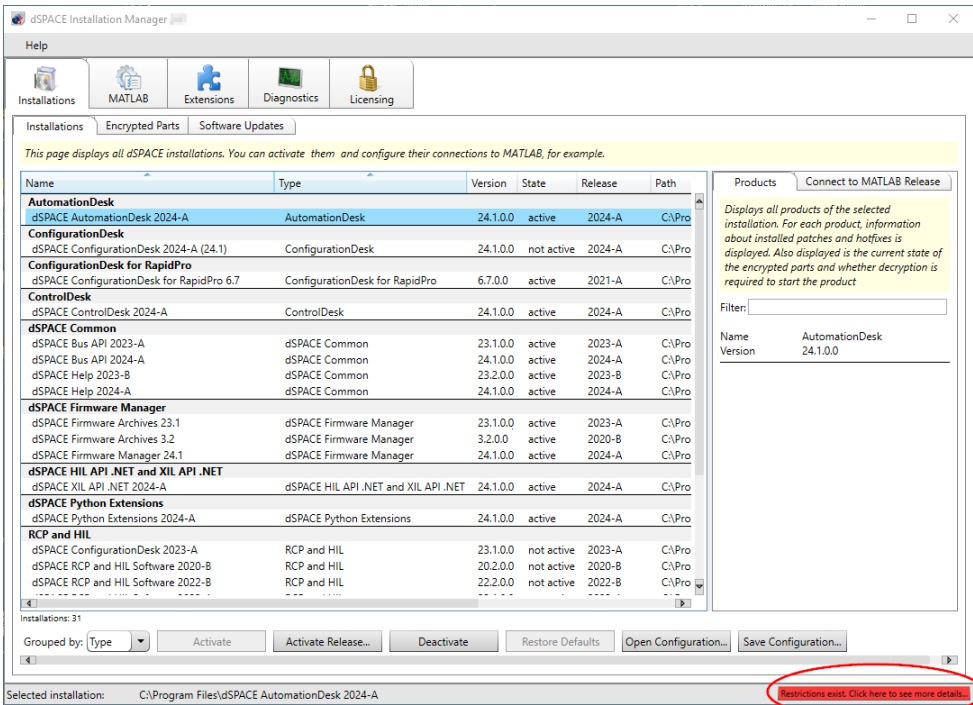
Working Without Administrator Rights

Motivation

You can work with dSPACE Installation Manager without administrator rights. dSPACE Installation Manager then runs in restricted mode.

Messages provided by dSPACE Installation Manager

When you start dSPACE Installation Manager, a message in the status bar indicates that dSPACE Installation Manager is in restricted mode. Refer to the following illustration:



You can click Restrictions exist... to see which actions are unavailable in dSPACE Installation Manager.



Actions you can perform without administrator rights

You can perform every action that does not explicitly need administrator rights. For example:

- View dSPACE installations and installed products.
- Check whether an update (such as a patch) is available for your installed dSPACE software.
- Decrypt encrypted archives of dSPACE software installations.
- Connect a dSPACE installation to a MATLAB installation.
- Manage licenses (e.g., for example, activate or update licenses).
- Collect installation and product information for contacting dSPACE Support.

Tasks that require administrator rights

You cannot perform any task that explicitly needs administrator rights. For example:

- Activate or deactivate dSPACE installations (the buttons for these tasks are grayed out on the Installations page).
- Integrate dSPACE software into a MATLAB installation.

Working While a Restart Is Pending

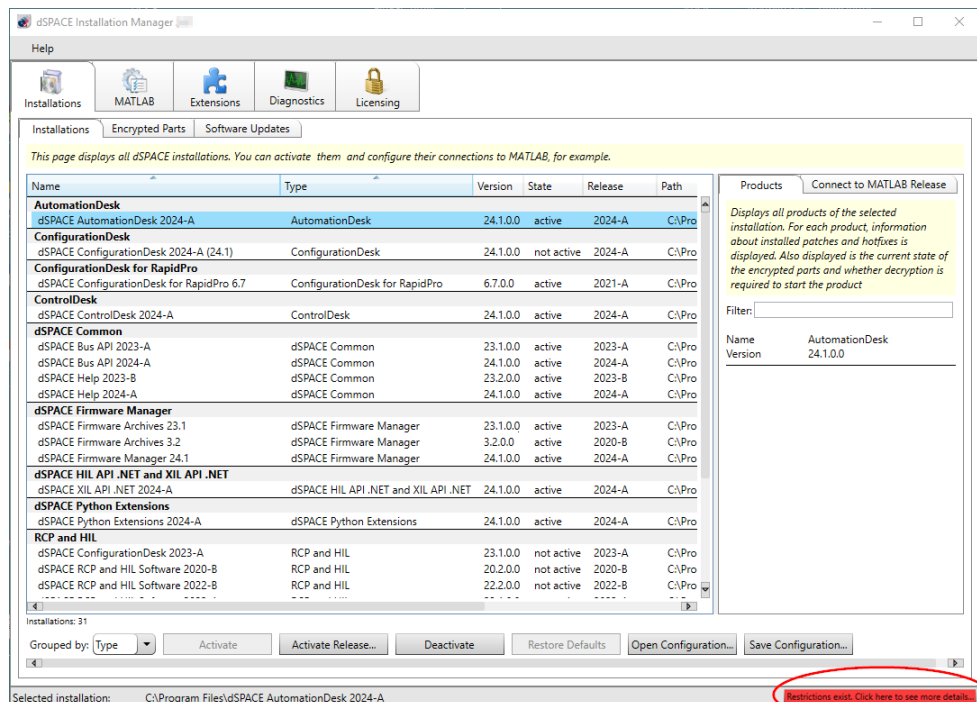
Motivation

You can work with dSPACE Installation Manager while a restart is pending. dSPACE Installation Manager then runs in restricted mode.

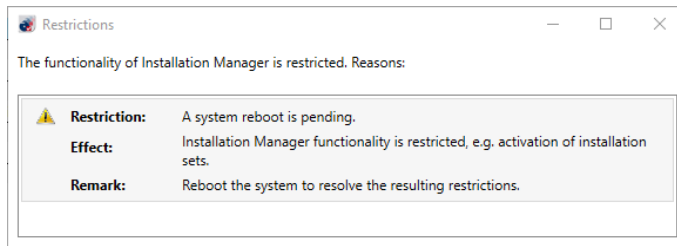
Messages provided by dSPACE Installation Manager

When you start dSPACE Installation Manager, it informs you whether it is running in restricted mode.

For example, if you added dSPACE software to your installation with dSPACE Setup, you are asked to restart your system. If you do not restart your system, dSPACE Installation Manager runs in restricted mode. This is indicated in the status bar:



You can click Restrictions exist... to see which actions are unavailable in dSPACE Installation Manager.



Possible actions while a restart is pending

You can perform every task that does not modify the installed software, such as:

- View dSPACE installations and installed products.
- Check whether an update (such as a patch) is available for your installed dSPACE software.
- Decrypt the encrypted archives of dSPACE software installations.
- Integrate dSPACE software into a MATLAB installation.
- Manage licenses (e.g., activate or update licenses).
- Collect installation and product information for contacting dSPACE Support.

Unavailable actions while a restart is pending

You cannot perform any task that modifies the installed software, such as:

- Activate or deactivate dSPACE installations (the buttons for these tasks are grayed out on the Installations page).
- Connect a dSPACE installation to a MATLAB installation.

Viewing Details of dSPACE Software Installations

Where to go from here

Information in this section

[How to View dSPACE Installations and Installed Products..... 15](#)

[Viewing Installed dSPACE Software Extensions \(Add-ins, Solutions\)..... 18](#)

How to View dSPACE Installations and Installed Products

Objective

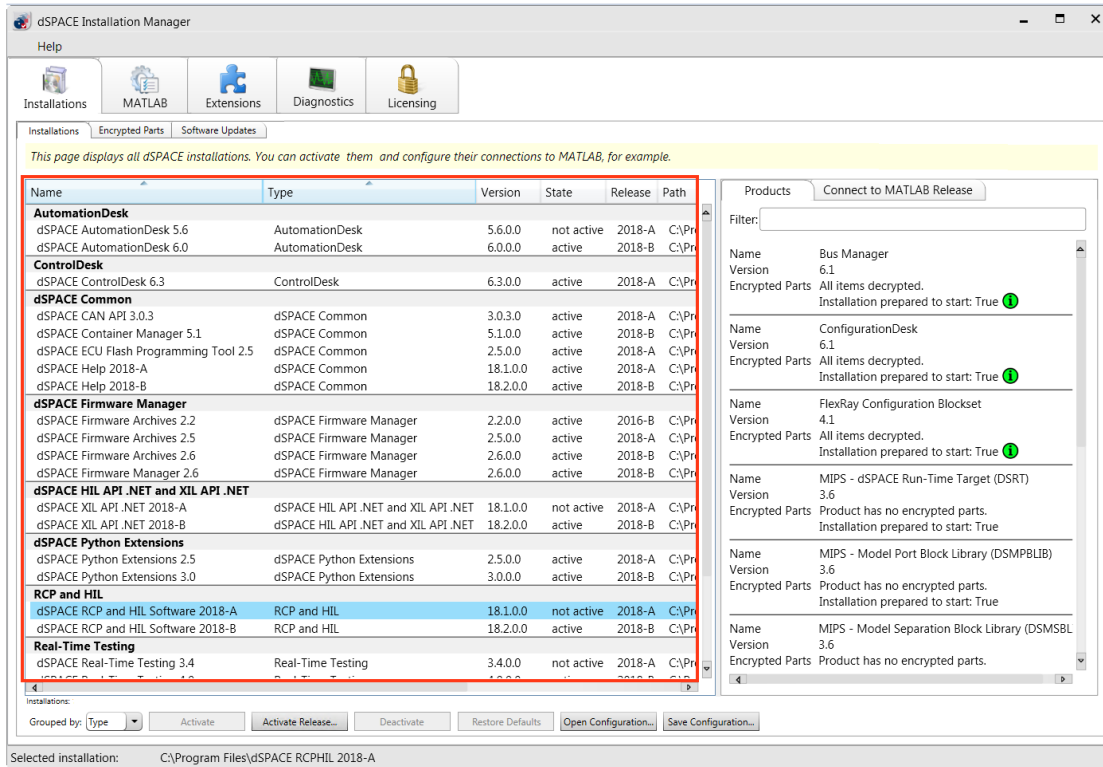
To get an overview of your available dSPACE software installations and installed products, you can use dSPACE Installation Manager.

Method

To view dSPACE installations and installed products

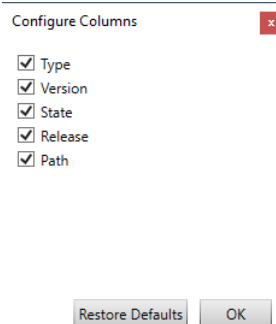
- 1 From Start – dSPACE Installation Manager, select dSPACE Installation Manager.
dSPACE Installation Manager opens.

- Click the Installations – Installations tab.
The page lists all dSPACE installations on your host PC as shown below.



The available installations are displayed with their version numbers, installation paths, and states (active or not active).

- Right-click the Installations page and select Configure Columns from the context menu.
- In the Configure Columns dialog, select the attributes you want to display.

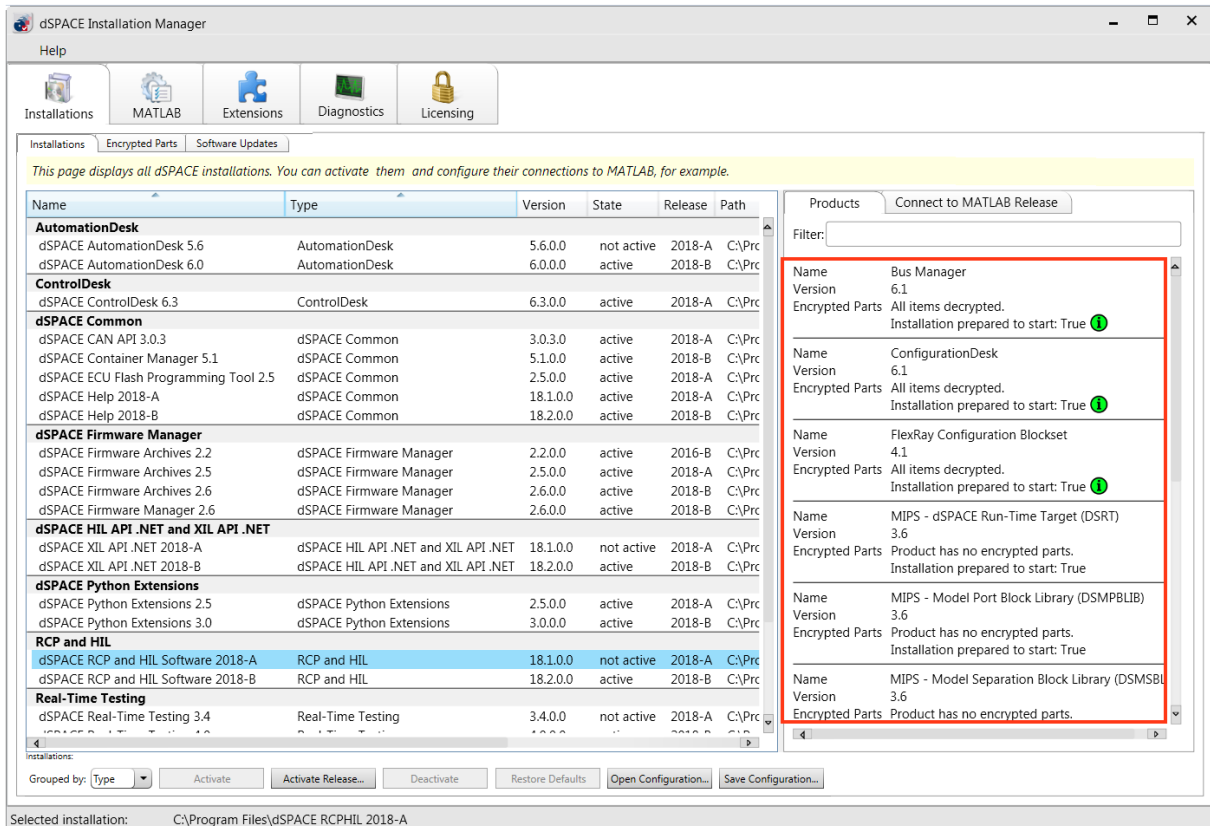


The following attributes are available:

Attribute	Description
Type	Type name of the installation.
Version	Version number of the installation.
State	Indicates whether the installation is active or not. The effects of an active state depend on the type of the installation (=

Attribute	Description
	product). For details, refer to Basics on Activation/Deactivation on page 39.
Release	dSPACE Release in which the selected installation is included the first time.
Path	Root directory of the installation.

5 Select an installation from the list.



Further details on the selected installation are displayed on separate pages on the right of the Installations page. The following information is available:

Page	Description
Products	Lists all the dSPACE products, including their version information, and status information on the encrypted parts of the selected software installation. Enter a product name in the Filter text field to show only specific entries. For installations as of dSPACE Release 2017-B, the Products page provides information about the product state related to out-of-date and decrypted items. For details on the states, refer to Basics on Decryption on page 31.

Page	Description
Connect to MATLAB Release	Lets you connect the selected dSPACE installation to one or more MATLAB installations and select the preferred MATLAB connection, if applicable. This page is displayed only for dSPACE installations that support working with MATLAB. For more information on connecting to MATLAB, refer to Introduction to Connecting a MATLAB Installation on page 47.
Extensions	Lists all the extensions (add-ins, solutions) of the selected software installation with their version number and a short description. The Extensions page is displayed only for dSPACE installations that contain an integrated extension.

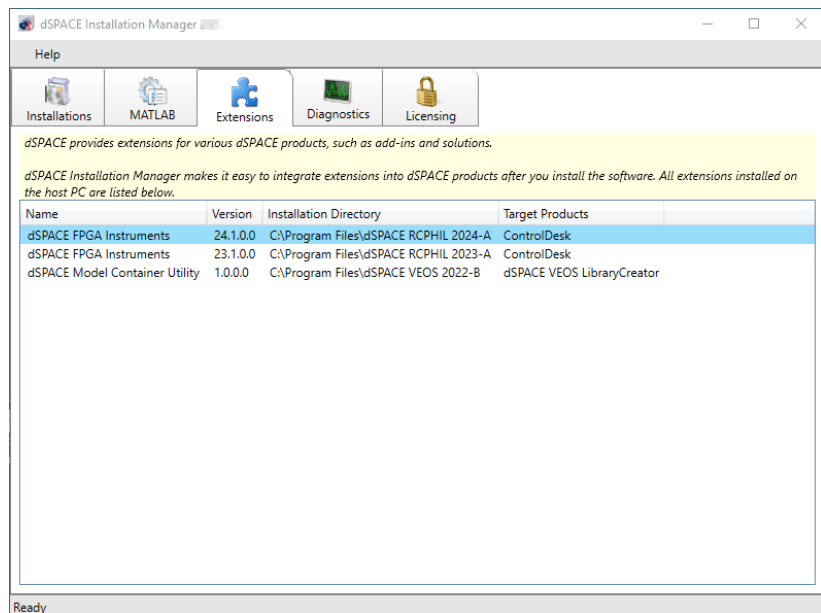
Viewing Installed dSPACE Software Extensions (Add-ins, Solutions)

Handling extensions

In addition to products, dSPACE provides various add-ins and solutions. After installing them, dSPACE Installation Manager displays them.

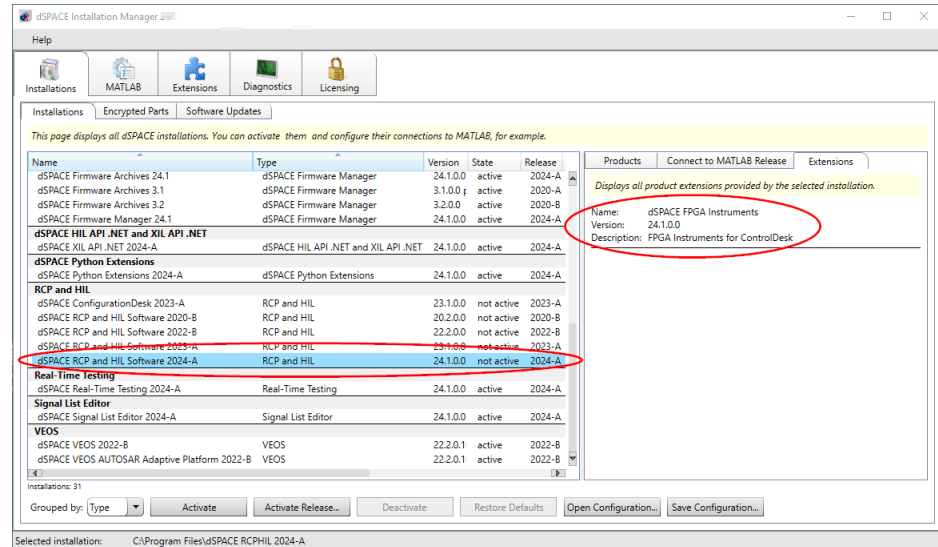
Viewing all installed extensions

All extensions installed on your host PC are listed on the Extensions page, as shown in the following illustration.



Viewing installation-specific extensions

Extensions that are provided by a specific installation are listed on the Extensions page of the installation, as shown in the following illustration.



The Extensions page is displayed only for dSPACE installations that contain an integrated extension.

Getting Information on Available dSPACE Software Updates

Where to go from here

Information in this section

Basics on Getting Information on Available dSPACE Software Updates.....	21
How to Get Information on Available Software Updates Manually.....	24
Checking for Software Updates Periodically in the Background.....	26

Basics on Getting Information on Available dSPACE Software Updates

Introduction

dSPACE Installation Manager can check and display whether an update (such as a patch) is available for your installed dSPACE software. This can be done manually or automatically. In the latter case, dSPACE Installation Manager uses notifications to inform you if a software update is available.

Restrictions

Note

Be aware of the following restrictions:

- Only updates for dSPACE software released with dSPACE Release 2020-A and later are displayed.
- For the following software, no updates are displayed, even if updates are available:
 - dSPACE Firmware Manager, dSPACE Firmware Archives
 - dSPACE Installation Manager
 - Third-party software provided with a dSPACE Release, for example, software from Wibu-Systems
 - dSPACE software that is not delivered within a dSPACE Release, for example, software products from the dSPACE Solutions collection or AURELION
- Hotfixes are not supported and therefore not displayed in general.

Checking for software updates

dSPACE Installation Manager can check, whether there are updates for the following installations:

- For the installations on your local PC.
- For the installations on other PCs using an imported XML configuration file. In this case, the dSPACE software installation to be checked does not exist on the local PC. You must create and save the XML configuration file on the other PC beforehand. Refer to [Basics on Working with Configuration Files](#) on page 55.

Checking for software updates via the dSPACE Installation Manager can be done in different ways:

- Manually via the Check for Updates button. Refer to [How to Get Information on Available Software Updates Manually](#) on page 24.
- Periodically in the background. A notification is generated when an update is available. Refer to [Checking for Software Updates Periodically in the Background](#) on page 26.

In both cases, an Internet connection to a specific dSPACE server (<https://notify.dspace.de/api/v1/software/extensions>) is required. This server hosts the relevant information for all dSPACE software products with the restrictions described above.

When checking for updates, the dSPACE Installation Manager connects to the dSPACE server and then compares the installations with the information on the server. If an update for a dSPACE product is missing on your local PC or in the imported file, dSPACE Installation Manager displays this on a separate page (see below).

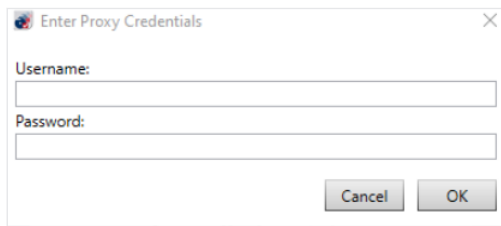
Specifying proxy settings for proxy servers If your network administrator has configured a proxy server, you must specify the appropriate proxy credentials (address, user name, password) to access the dSPACE server. Otherwise, the connection to the dSPACE server will not be possible.

To specify the proxy credentials, dSPACE Installation Manager uses the `ProxySettings.json` file. It is located in the `ProgramFiles\dSPACE\InstallationManager\bin` folder after installation of the software.

You have to enter the settings directly in the file. The following illustration shows the entries with an example of a proxy address:

```
{
  "proxyAddress": "http://proxy.dspace.de:3128",
  "proxyUsername": "",
  "proxyPassword": ""
}
```

- If you want to work only with the API of the dSPACE Installation Manager on your host PC and not with the GUI application: You have to enter all settings (address, user name, password) directly in the file.
- If you use the GUI application of the dSPACE Installation Manager, and you have not specified the Username and the Password: A dialog for entering the required settings appears. Refer to the following dialog.



Displaying available software updates

Available software updates are displayed for each software installation separately on the Available Software Updates page. All available information for each software update is displayed here. If an update does not provide a specific piece of information, this property is not displayed at all. Thus, the list of displayed information can be different for each update. For an example, refer to the following illustration.

Available Software Updates

Displays information about available software updates for the selected installation.

Name	TL 22.1p1
Type	Patch
Description	TargetLink 22.1p1
Creation Date	02.03.2023
Version	22.1.0.61
Website	https://www.dspace.de/produkte/TL-22.1p1-061/02
File Download	https://www.dspace.de/produkte/TL-22.1p1-061/02
Your affected product(s)	TargetLink Base Suite (Version 22.1.0.0) Data Dictionary Manager (Version 22.1.0.0) TargetLink (Version 22.1.0.1) TargetLink AUTOSAR Module (Version 22.1.0.0) TargetLink Adaptive AUTOSAR Module (Version 22.1.0.0) TargetLink Module for MATLAB(R) Code (Version 22.1.0.0)

As shown above, a link to download the update directly is also provided, if available.

How to Get Information on Available Software Updates Manually

Objective

To check for available updates (such as patches) for the installed dSPACE software and to display them, you can use dSPACE Installation Manager.

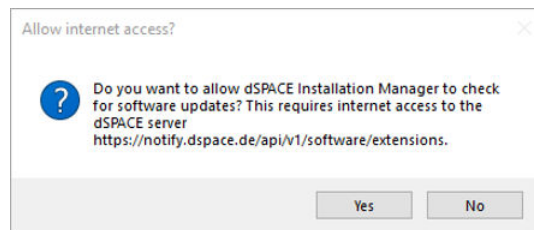
Preconditions

- An Internet connection to a specific dSPACE server (<https://notify.dspace.de>) exists. This server hosts the information about available software updates for all dSPACE products.
- The update does not fall under the restrictions. If the update does, it will not be displayed, even if updates are available. Refer to [Basics on Getting Information on Available dSPACE Software Updates](#) on page 21.
- If the software is to be checked on another PC and not on the local PC: A configuration XML file is created and saved. Refer to [Basics on Working with Configuration Files](#) on page 55.

Method

To get information on available software updates manually

- 1 From Start – dSPACE Installation Manager, select dSPACE Installation Manager.
dSPACE Installation Manager opens.
- 2 Click the Installations – Software Updates tab on the Installations page.
When you open the Software Updates page for the first time after installing dSPACE Installation Manager, the following dialog is displayed:

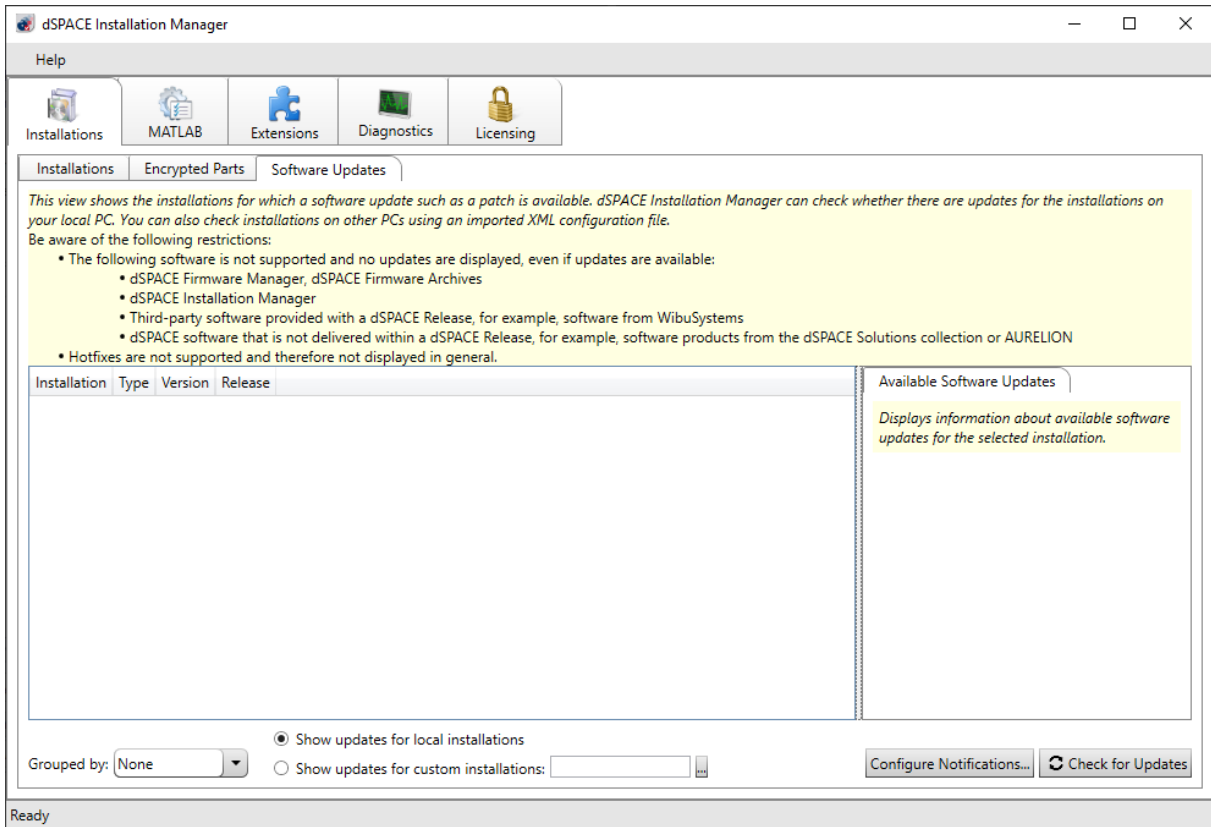


- 3 If you want to check for software updates manually, click No .

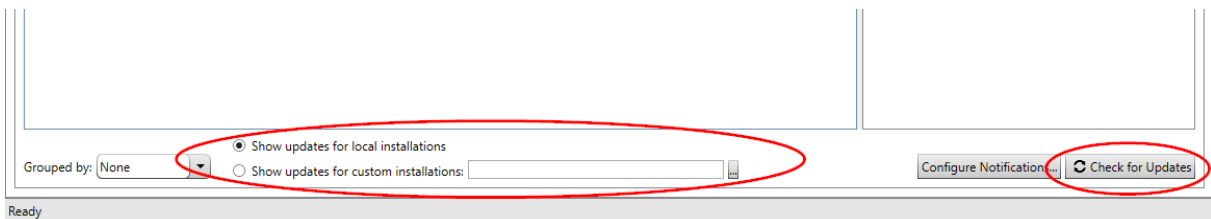
Tip

If you confirm the dialog with Yes, the notification feature will be enabled with the default settings.

The Software Update page is displayed as follows:



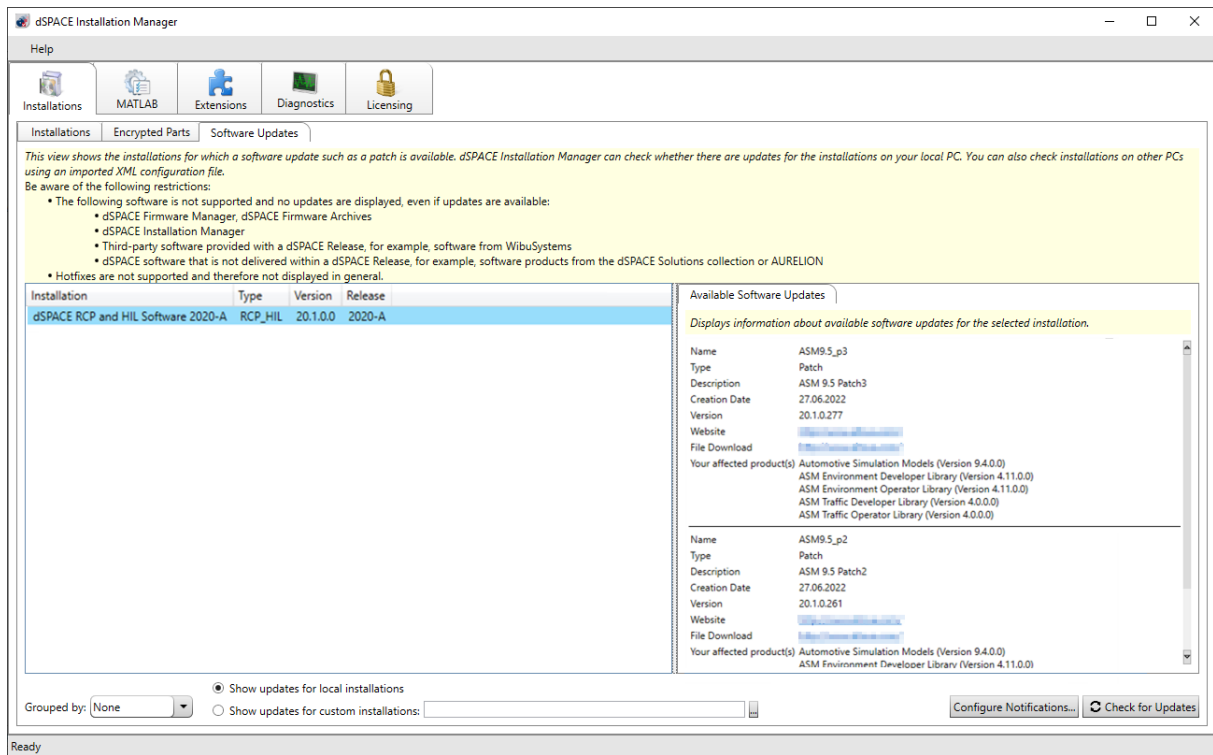
- 4 Select one of the following options (see illustration below):
- Select Show updates for local installations if you want to check the dSPACE installations on your local PC.
 - Select Show updates for custom installations if you want to check the installations on another PC. Then you do not have to install the software to be checked on your local PC.
In this case, you have to specify the path of the relevant configuration XML file beforehand.



- 5 Click the Check for Updates button (see illustration above).

Result

dSPACE Installation Manager connects to the dSPACE server, which contains the relevant information, checks for differences, and displays the available software updates that are not installed. Refer to the following example:



Next steps

Use the download link to download the corresponding update or visit the dSPACE website (<https://www.dspace.com/go/patches>) to download the update from there. For instructions on installing the update, refer to [How to Install dSPACE Software Updates and Patches \(Installing dSPACE Software\)](#).

Checking for Software Updates Periodically in the Background

Introduction

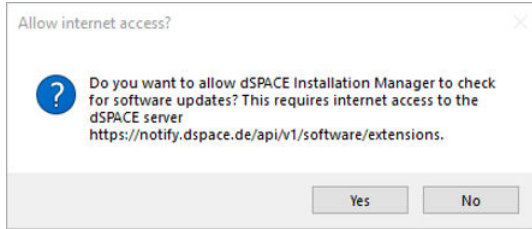
You can check your installations for software updates via the dSPACE Installation Manager periodically in the background. In this case, you will be informed by notifications when an update is available without having to start and run the dSPACE Installation Manager. You can configure this notification feature.

Precondition

To check for software updates, dSPACE Installation Manager requires an Internet access to a specific dSPACE server (<https://notify.dspace.de/api/v1/software/extensions>). This server hosts the information about available software updates for all dSPACE products.

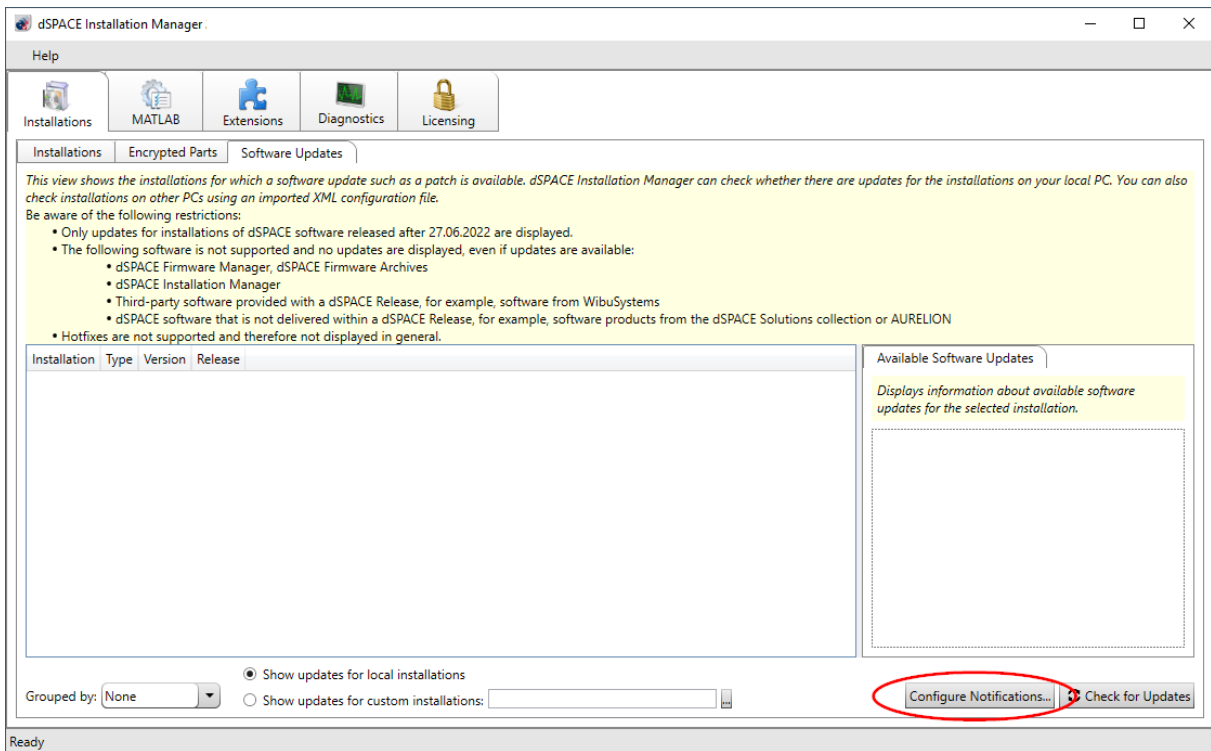
Enabling, disabling and configuring the notification feature

When you open the Software Updates page for the first time after installing dSPACE Installation Manager, the following dialog is displayed:

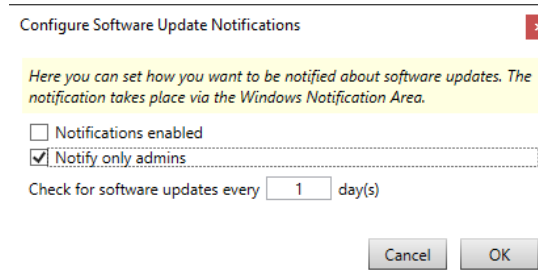


If you confirm the dialog with Yes, the notification feature will be enabled with the default settings.

To subsequently enable/disable or configure the notification feature, dSPACE Installation Manager provides a specific dialog. You can access this dialog via the Configure Notifications button on the Software Updates page. Refer to the following illustration.



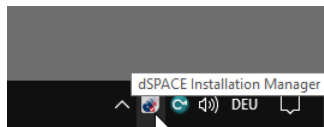
The following illustration shows the dialog with sample settings.



You can select the Notify only admins checkbox if you also want to set the notification feature only for PCs with administrator rights. The cycle for checking for updates is specified in days.

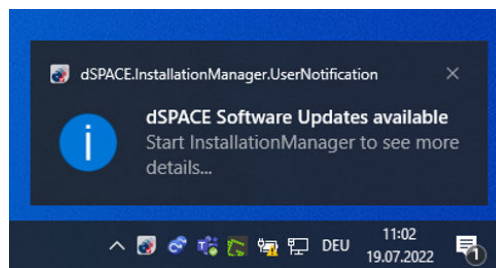
Displaying of notifications via Windows taskbar

If you have enabled notifications for software updates, the dSPACE Installation Manager notification icon is available in the notification area of the Windows taskbar. It is started by the Windows autostart function when you start your PC. Refer to the following illustration.



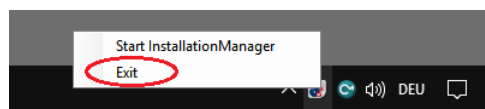
With this feature, notifications are displayed without starting and running dSPACE Installation Manager.

If there is a notification, dSPACE Installation Manager displays a message on the screen. Refer to the following example.



You can start the dSPACE Installation Manager by clicking on the message box. In this case, the dSPACE Installation Manager automatically switches to the Software Update page. There, the affected installations are displayed automatically (see below).

Closing the Windows taskbar notification feature You can use the Exit command in the context menu to close the Windows taskbar notification feature until the next time you start your PC.



Note

When you close the dSPACE Installation Manager notification feature, note that the notifications about expired licenses or licenses about to expire are also closed.

Decrypting Encrypted Archives of dSPACE Software Installations

Motivation Some parts of dSPACE software, the documentation, demo models, .NET code, etc. are installed in encrypted archives on the end user's PC. To use them, you have to decrypt the encrypted archives.

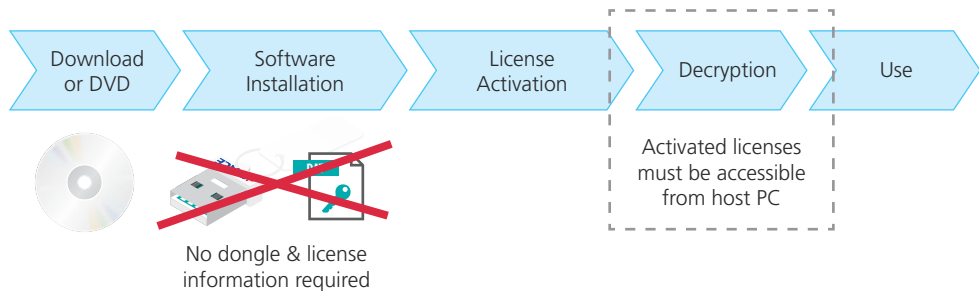
Where to go from here

Information in this section

Basics on Decryption.....	31
How to Decrypt Encrypted Archives of dSPACE Software Installations.....	35

Basics on Decryption

Motivation The software installation process is license-independent. No license information and/or dongles are required during the installation.



As a consequence, you can install the complete dSPACE Release without any license. However, specific parts of dSPACE software, the documentation, demo

models, .NET code, etc. are installed in encrypted archives on the end user's PC. To use these parts, you first have to activate licenses and then decrypt the encrypted archives.

Preconditions

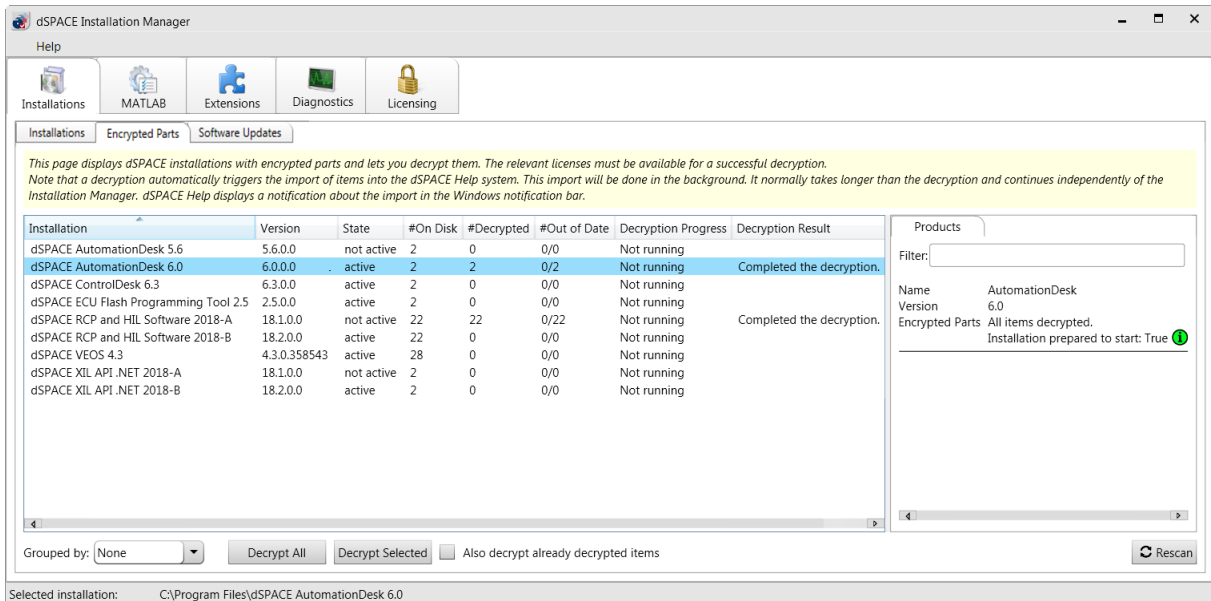
- You can only decrypt archives, for which you activated product licenses. These licenses must be accessible from your host PC during the decryption process, for example, via a connected CmDongle. The decryption process does not block the required licenses.
- Before starting the decryption, close all dSPACE programs (except dSPACE Installation Manager) and also MATLAB. Do not start the programs during decryption.

Tip

Decryption does not require administrator rights, so the end users can perform this step themselves. The files are extracted to folders below %ProgramData%\dSPACE\\.

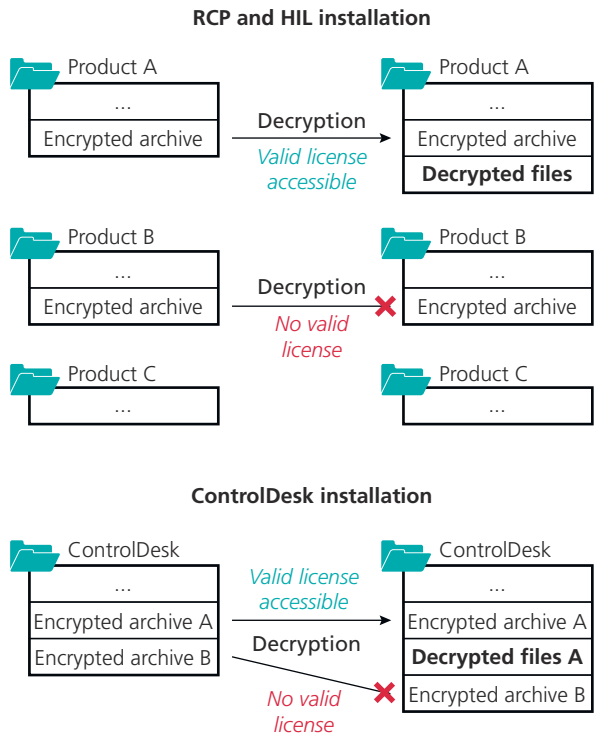
Performing decryption

dSPACE Installation Manager checks if encrypted archives are available and displays all installed software products/packages that contain encrypted archives. Refer to the following illustration. Software products/packages that do not contain encrypted archives are not displayed on the page.



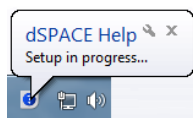
You can start the decryption process either for selected or for all installations that are displayed. Decryption lasts about as long as unpacking ZIP files. Anti virus software can slow down the process.

The following illustration provides an overview of the decryption results:



After initial decryption, all files stay decrypted on the host PC and can be used with the dSPACE software.

Notes on decrypting user documentation When documentation is decrypted, the decrypted files are automatically imported to dSPACE Help. This separate process can take a few minutes longer than decryption. An icon and notifications in the notification area of the Windows taskbar inform you about the progress.



Notes on installing patches After a dSPACE installation was updated with a software patch, check if dSPACE Installation Manager displays "Out of Date" archives on the Encrypted Parts page. In this case, you have to run the decryption process again for the patched installation. This also applies when you remove a patch from your dSPACE installation.

Displaying the decryption state

On the Encrypted Parts page, dSPACE Installation Manager displays the progress of the decryption process and gives helpful status information.

Column	Description
Installation	Name of the selected dSPACE installation. Example: dSPACE RCP and HIL Software Release 2021-A
Version	Version of the dSPACE software product or software package that belongs to the selected installation. Example: 21.2

Column	Description
#On Disc	Number of encrypted archives that are installed on your host PC belonging to the selected installation.
#Decrypted	Number of decrypted archives belonging to the selected installation.
#Out of Date	Number of decrypted archives whose version does not match the version of the new installed encrypted archives. This can occur, for example, after you installed a patch. Decrypt the archives of the related installation again.
Info	Provides information on all archives in the selected installation: <ul style="list-style-type: none"> Up to date: The time stamp of the decrypted files matches the time stamp of the encrypted archives. Some expected items are missing: If this state is displayed, repair your installation via dSPACE Setup or contact dSPACE Support. Some items are not yet decrypted: Not all of the installed archives are decrypted. This occurs if you installed products, containing encrypted archives, that you cannot decrypt due to missing product licenses.
Decryption Progress	Current state of the decryption process displayed via a progress bar. Not running is displayed if no decryption process is running.
Decryption Result	Result of the last decryption (since dSPACE Installation Manager was started): <ul style="list-style-type: none"> Succeeded: Decryption finished successfully. Failed: Decryption failed. This can occur, for example, for the following reasons: <ul style="list-style-type: none"> A required product license is not accessible during the decryption process. There is not enough disk space on the system partition to extract the encrypted archives. For the exact reason for a failed decryption, check the %CommonProgramFiles%\dSPACE\InstallationManager\ArchiveDecryption_<InstallationGUID> log file.
State	State of the selected installation: <ul style="list-style-type: none"> Active: The selected installation is the <i>active installation</i>. Not active: The selected installation is an <i>inactive installation</i>. For more information on activating a dSPACE installation, refer to Activating and Deactivating dSPACE Installations on page 39.
Release	Name of the dSPACE Release. Example: 2021-A
Path	Installation path of the selected installation. Example: C:\ProgramFiles\dSPACE AutomationDesk 6.5

Displaying the product state For installations as of dSPACE Release 2017-B, the Products page provides information about the product state related to out-of-date and decrypted items.

Status Icon	Product Start	Description	Action
No icon	Possible	The product contains no encrypted archives.	–
Grey	Not possible	The encrypted archives installed on your PC are not decrypted. You cannot start the product.	Decryption is required.
Yellow	Possible	The encrypted archives installed on your PC are not decrypted. However, they are not required for starting the product. You can start the product and work with restricted functionality. For example, documentation of the product is not usable.	Decryption is recommended.

Status Icon	Product Start	Description	Action
Red	Not possible	At least one decrypted archive installed on your PC is out-of-date. This state typically occurs after you installed a software patch for the product. You cannot start the product.	Decryption is required again.
Green	Possible	The encrypted archives are decrypted and the decrypted parts are up to date. You can start the product and work with it without restrictions.	–

How to Decrypt Encrypted Archives of dSPACE Software Installations

Objective

To use the full functionality of the installed dSPACE software, you have to decrypt the encrypted archives of dSPACE software installations.

Basics

For basic information on decryption, refer to [Basics on Decryption](#) on page 31.

Preconditions

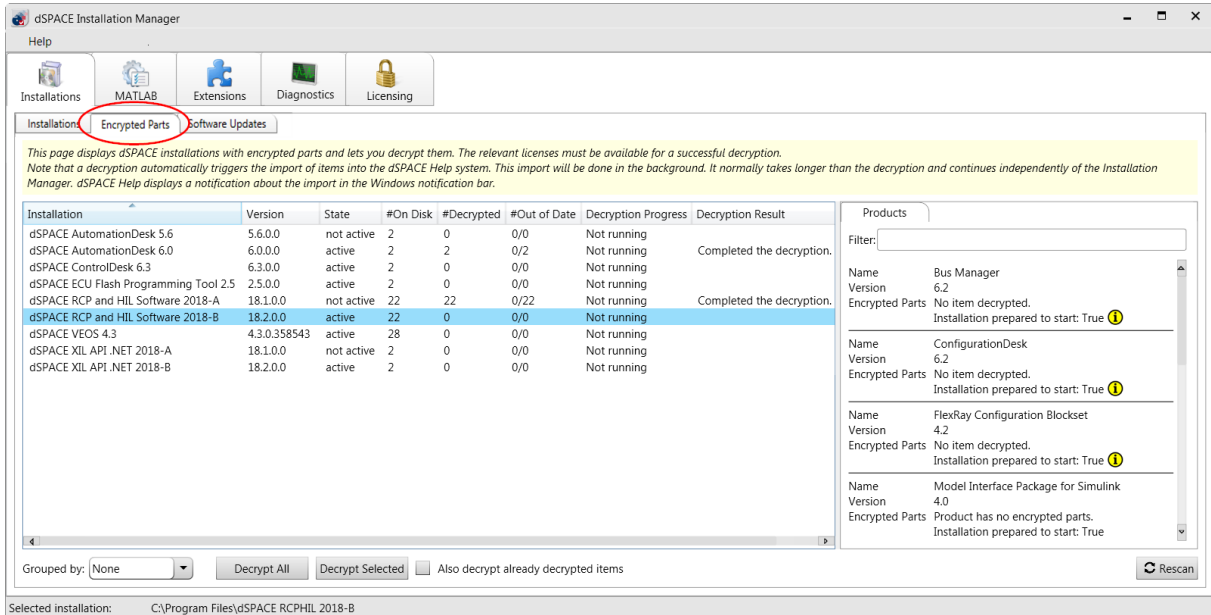
Activated product licenses must be accessible from your host PC, for example, via a connected CmDongle.

Method

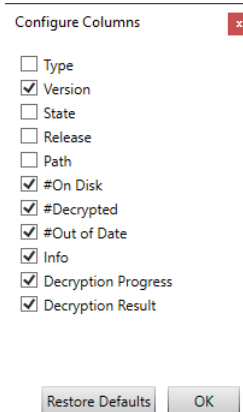
To decrypt encrypted archives of dSPACE software installations

- 1** Close all installed dSPACE programs on your host PC.
- 2** From Start – dSPACE Installation Manager, select dSPACE Installation Manager.
dSPACE Installation Manager opens.
- 3** Click the Installations tab.

- Click the Encrypted Parts tab on the Installations page.
The page displays all installed software products and packages on your host PC that contain encrypted archives. Refer to the following illustration:

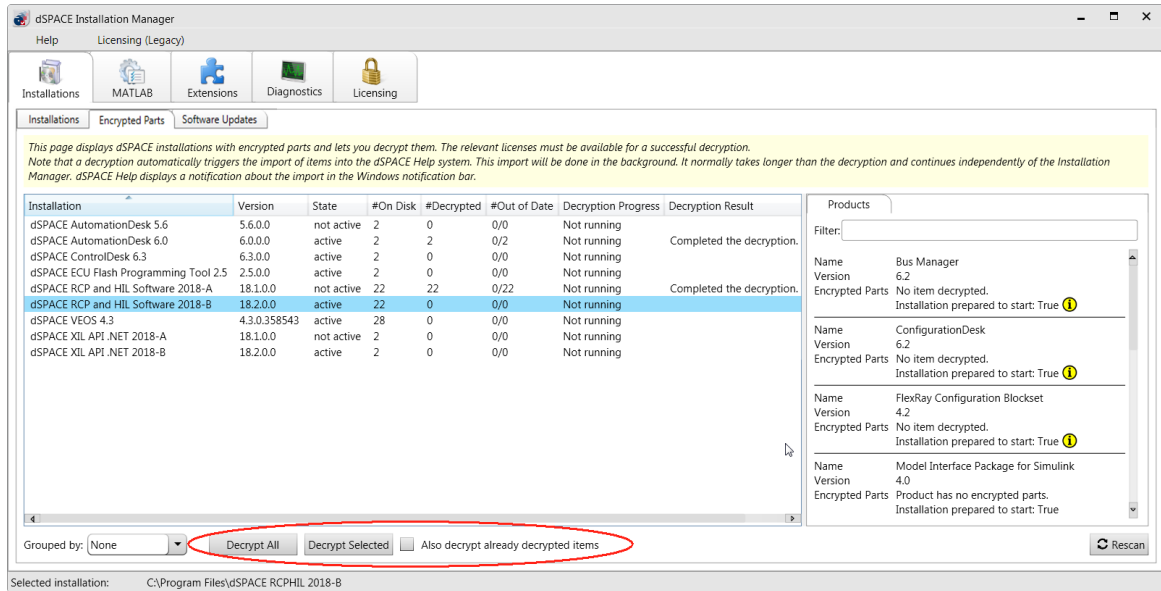


- Click Rescan to update the table.
- Right-click the Encrypted Parts page and select Configure Columns from the context menu.
- In the Configure Columns dialog, select the attributes you want to display.



For a description of the attributes, refer to [Basics on Decryption](#) on page 31.

8 Click one of the following buttons to start the decryption process:



Button/Option	Description
Decrypt Selected	Decrypts the encrypted archives of the selected dSPACE installation.
Decrypt All	Decrypts the encrypted archives of all displayed dSPACE installations in one run.
Also decrypt already decrypted items	Use this option only if you want to replace already decrypted files. Archives that are not out of date are decrypted again as well. Note, that this has the following result, for example: Demos that you modified are overwritten with the demos delivered in the decrypted archive.

Result

The encrypted archives of the selected dSPACE installations are decrypted. You can see the decryption result in the corresponding Parts row on the Encrypted Parts page.

Activating and Deactivating dSPACE Installations

Where to go from here

Information in this section

Basics on Activation/Deactivation.....	39
How to Activate a Single dSPACE Installation.....	42
How to Activate All Installations of a Specific dSPACE Release in One Step.....	43

Basics on Activation/Deactivation

Active installation

One of the installations of each dSPACE software installation (for example, ControlDesk) is the *active installation*. If your system contains more than one installation (from different Releases, for example), you can activate a specific installation manually.

Tip

Not every dSPACE software product needs to be activated before use. For example, this function is not available for the installations of TargetLink and Model Compare.

Rules for activation

- The last installation of a software product that you install on your host PC automatically becomes the active installation.
- Every time you activate a deactivated installation manually, the current active installation is automatically deactivated before.
- Valid for installations of dSPACE Release 2017-B and later:
If you modify, repair or remove a product set that contains deactivated installations, the deactivated installation is activated first.

Example for products included in multiple product sets You want to add the VEOS product set to your installation of dSPACE Release 2017-B. The VEOS product set contains the Model Interface Package for Simulink. The Model Interface Package for Simulink is also included in other product sets and it is part of the RCP and HIL software package.

Adding the Model Interface Package for Simulink modifies an existing RCP and HIL installation of dSPACE Release 2017-B, which is therefore automatically activated, even if an installation of an earlier dSPACE Release (e.g., Release 2016-A) is the active installation. Your installation of RCP and HIL software (Release 2016-A) is automatically deactivated. You have to activate it again manually if you want to use it later on.

Activating multiple installations in one step

You can activate all dSPACE installations on your PC that belong to a specific dSPACE Release with the Activate Release button in one step.

The same rules apply as for activating a single installation (see above).

Effects of activation

The effects of activating a dSPACE installation depend on the dSPACE software product or dSPACE installation.

AutomationDesk Activating a specific AutomationDesk installation means registering default settings and file assignments for automatic tasks, for example, to open ADP files from other software products. You can also work with an inactive AutomationDesk installation, but then these automatic tasks are not provided.

ConfigurationDesk The effects of activating a ConfigurationDesk installation depend on the version of the installation:

- As of ConfigurationDesk 2024-A (24.1):

Activating a specific ConfigurationDesk installation as of ConfigurationDesk 24.1 means that the ConfigurationDesk automation interface of the selected installation is registered and you can then work with it.

You can also work with an inactive ConfigurationDesk installation, but then without automation tasks.

- Up to ConfigurationDesk 2023-B (23.2):

Activating a specific ConfigurationDesk installation up to ConfigurationDesk 23.2 means that you can start ConfigurationDesk and work with it. The shortcuts in the Start menu change according to the selected installation and the ConfigurationDesk automation interface of the selected installation is registered.

Note

The following additional dependencies apply for activating/deactivating a ConfigurationDesk installation up to ConfigurationDesk 2023-B (23.2):

- If you activate/deactivate a ConfigurationDesk installation, the RCP and HIL software installation and the MotionDesk installation of the related dSPACE Release also are activated/deactivated.
- If you activate/deactivate the RCP and HIL software installation, the ConfigurationDesk installation and the MotionDesk installation of the related dSPACE Release also are activated/deactivated.
- If you activate/deactivate a MotionDesk installation, the ConfigurationDesk installation and the RCP and HIL software installation of the related dSPACE Release also are activated/deactivated.

ControlDesk Activating a specific ControlDesk installation means registering the ControlDesk automation interface. You can also work with an inactive ControlDesk installation. To access an inactive ControlDesk installation via automation, you have to supply version information on the inactive ControlDesk installation. For more information, refer to [Automating Different ControlDesk Versions \(ControlDesk Automation !\[\]\(c3d993ca47bfe2a953c700506ce31fa0_img.jpg\)](#)).

RCP and HIL software**Tip**

'RCP and HIL software' is a generic term for a software package containing several dSPACE software products, for example, ASM, Model Interface Package for Simulink, RTI, and ModelDesk. These software products are installed in a common folder. As of dSPACE Release 2023-A, ConfigurationDesk is no longer part of the RCP and HIL software package. It is installed in its own folder.

For a complete overview of products in the RCP and HIL software package, refer to [Mapping Between Products and Product Sets \(Installing dSPACE Software !\[\]\(17413706fd4997a1a4bdf85c6864eee1_img.jpg\)](#)).

Activating a specific RCP and HIL software installation means that you can start the contained products and work with them. The shortcuts in the Start menu change according to the selected installation.

Note

Valid only for installations up to dSPACE Release 2023-B: If you activate/deactivate a RCP and HIL software installation, the MotionDesk and the ConfigurationDesk installation of the related dSPACE Release also are activated/deactivated.

Valid for RCP and HIL software installations of dSPACE Release 2017-A and earlier: The uninstall entries of the operating system are also changed according to the selected installation. The uninstall entries are accessible via Control Panel – Programs – Uninstall a program.

Before you can use a product from a deactivated RCP and HIL installation, you have to activate this installation. You can work with only one RCP and HIL installation at a time.

Real-Time Testing (RTT) Activating a specific RTT version means that all products that can work with RTT (AutomationDesk, ControlDesk, Python, customer software) automatically use the active installation. You cannot work with an inactive RTT installation.

SystemDesk Activating a specific SystemDesk installation means registering the SystemDesk automation interface and linking SystemDesk project (SDP) files to the installation to be activated. To access an inactive SystemDesk installation via automation, you have to supply version information on the inactive SystemDesk installation.

VEOS Activating a specific VEOS installation means registering VEOS Player's automation interface and linking offline simulation application (OSA) files to the installation to be activated.

How to Activate a Single dSPACE Installation

Objective

One of the installations of each dSPACE software installation (for example, ControlDesk) is the *active installation*. If your system contains more than one installation (from different Releases, for example), you can activate a specific installation manually.

Tip

Not every dSPACE software product needs to be activated before use. For example, this function is not available for the installations of TargetLink and Model Compare.

Basics

For more information on activation, deactivation, and their effects, refer to [Basics on Activation/Deactivation](#) on page 39.

Precondition

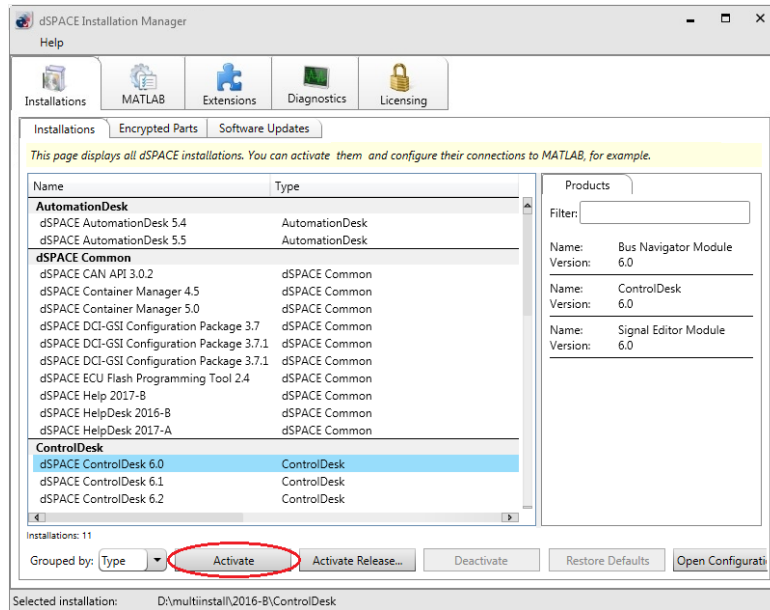
You have administrator rights.

Method

To activate a single dSPACE installation

- 1 Close all dSPACE programs and MATLAB (if used).
- 2 From Start – dSPACE Installation Manager, select dSPACE Installation Manager.
dSPACE Installation Manager opens.
- 3 Click the Installations tab.
The Installations page lists all dSPACE installations on your host PC.

4 Select the installation you want to activate.



5 Click Activate.

Note
Activation may take some time.

6 When prompted, restart your system.

Result

The selected installation becomes the active installation.

Valid only for the RCP and HIL software installations of dSPACE Release 2017-A and earlier: The uninstall entries (via Control Panel – Programs – Uninstall a program) are modified according to the selected installation.

How to Activate All Installations of a Specific dSPACE Release in One Step

Objective

You can activate all installations that belong to a specific dSPACE Release with the Activate Release button in one step.

Basics

For more information on activation, deactivation, and their effects, refer to [Basics on Activation/Deactivation](#) on page 39.

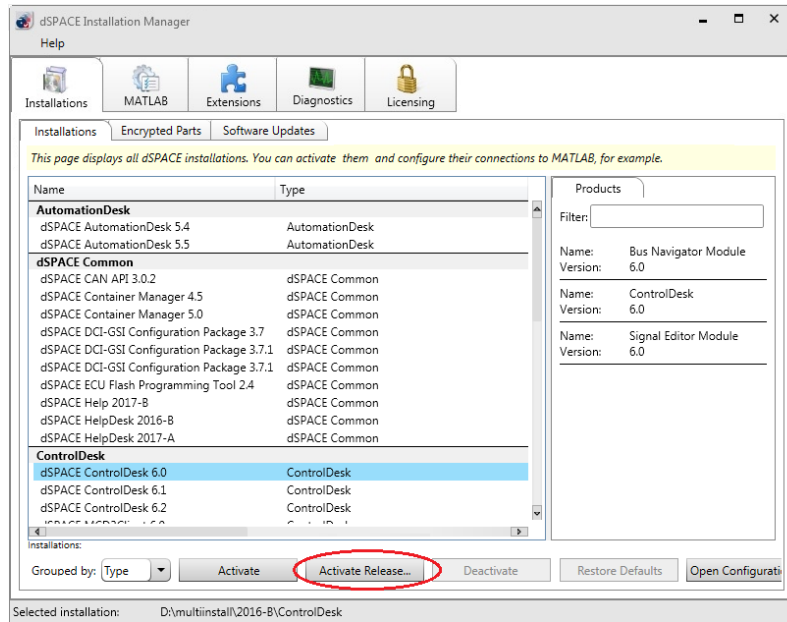
Precondition

You have administrator rights.

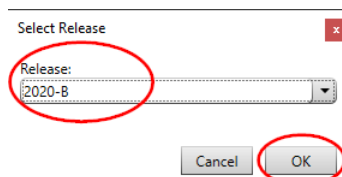
Method

To activate all installations of a specific dSPACE Release in one step

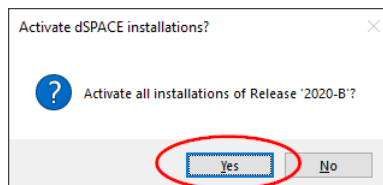
- 1 Close all dSPACE programs and MATLAB (if used).
- 2 From Start – dSPACE Installation Manager, select dSPACE Installation Manager.
dSPACE Installation Manager opens.
- 3 Click the Installations tab.
The Installations page lists all dSPACE installations on your PC.



- 4 Click Activate Release.
- 5 Select the Release you want to activate and click OK.



- 6 Confirm the following dialog:



Note
Activation may take some time.

- 7 When prompted, restart your system.

Result

- The installations that belong to the selected dSPACE Release are activated.
- Valid only for the RCP and HIL software installations of dSPACE Release 2017-A and earlier: The uninstall entries (via Control Panel – Programs – Uninstall a program) are modified according to the selected installation.

Connecting dSPACE Installations to MATLAB

Objective If you want to work with dSPACE software that requires MathWorks software, such as MATLAB and Simulink, a dSPACE installation must be connected to MATLAB software. Only a connected MATLAB installation can be used with dSPACE software.

Where to go from here

Information in this section

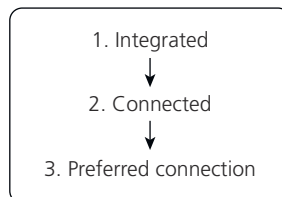
Introduction to Connecting a MATLAB Installation.....	47
Basics on Changing the Connection to MATLAB.....	50
How to Change the MATLAB Connection.....	52

Introduction to Connecting a MATLAB Installation

Motivation Only a connected MATLAB installation can be used with dSPACE software.

Connection states

A connection between dSPACE software and a MATLAB installation is characterized by the following states:



Integrated dSPACE software is integrated into a specific MATLAB installation. This MATLAB installation then is prepared to be used with dSPACE software.

Connected A dSPACE installation (e.g., RCP and HIL, TargetLink) is connected to a MATLAB installation. As a result, the connected MATLAB installation is ready to be used with the dSPACE installation.

Preferred connection A preferred connection is the connection that dSPACE products use by default, e.g., when starting MATLAB or generating specific MATLAB files.

If only one MATLAB installation is connected, it is automatically the preferred connection. If multiple MATLAB installations are connected to one dSPACE installation, one of them is the preferred connection.

Note

Only some dSPACE products require a preferred MATLAB connection if they are connected to multiple MATLAB installations, for example, AutomationDesk and ConfigurationDesk. Others, such as TargetLink, do not need a preferred MATLAB connection.

Connections established automatically

Condition: MATLAB was installed before dSPACE software.

During software installation, dSPACE Setup automatically performs the following:

- Integrates dSPACE software (that requires MATLAB) into all compatible MATLAB installations that are found locally on the PC.
- Connects all dSPACE installations that require MATLAB to all compatible and integrated MATLAB installations.
- Sets the preferred connection.

If multiple MATLAB installations are connected to one dSPACE installation, the compatible MATLAB installation with the highest version is set as the preferred connection.

Changing connections manually

You can use dSPACE Installation Manager to change the connection between dSPACE software and MATLAB installations at any time after the initial installation of dSPACE software. This is useful in the following cases:

- You want to change the automatic settings made during the installation of dSPACE software.
- You want to integrate dSPACE software into a MATLAB installation from a network drive.
- You install MATLAB after installing dSPACE software and you want the dSPACE software to use it.

Tip

This also applies if a MATLAB installation was installed again but the dSPACE software was not.

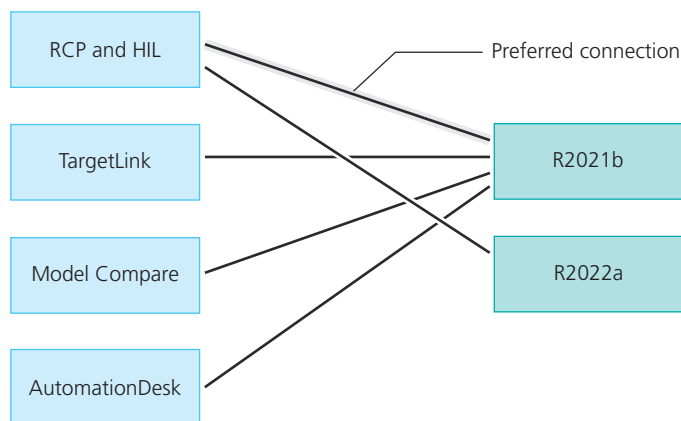
Possible connections between dSPACE installations and MATLAB

The following rules for connecting apply:

- One dSPACE installation can be connected to multiple MATLAB installations.
- Multiple dSPACE installations can be connected to one MATLAB installation. A one-to-one relationship between a dSPACE installation and a MATLAB installation is not required.
- In general, products of the same bit variant can be connected and used together. For example, TargetLink's 64-bit variant can be connected to a 64-bit MATLAB variant but not to a 32-bit variant.
- Multiple installations of the same type (e.g., RCP and HIL, TargetLink) of different Releases cannot be connected to the same MATLAB installation. Example: TargetLink 5.0 (on dSPACE Release 2019-B) and TargetLink 5.1 (on dSPACE Release 2020-B) cannot be connected together to MATLAB R2019b.
- Only compatible MATLAB installations can be connected to a dSPACE installation. For an overview of compatible products of dSPACE Release 2024-A, refer to [Required MATLAB Releases \(Installing dSPACE Software\)](#).

The following illustration shows examples of possible combinations of MATLAB and dSPACE installations:

dSPACE installation ... connected to ... MATLAB installation



Connection between ConfigurationDesk and MATLAB

ConfigurationDesk requires Model Interface Package for Simulink for a connection to MATLAB and to work with Simulink models.

Note

As of dSPACE 2023-A, ConfigurationDesk is no longer part of the RCP and HIL software package. ConfigurationDesk is installed in a separate folder and you can access the ConfigurationDesk installation independently of the RCP and HIL software installation. However, the Model Interface Package for Simulink is still part of the RCP and HIL software installation. Thus, the MATLAB support of ConfigurationDesk is the same as that of the RCP and HIL software installation because it includes the Model Interface Package for Simulink. A direct connection between the ConfigurationDesk installation and a MATLAB installation is not possible.

As of dSPACE Release 2022-A, ConfigurationDesk (via Model Interface Package for Simulink) can also use a MATLAB instance of a connected MATLAB installation that is not configured as the preferred connection in the dSPACE Installation Manager. If you have multiple MATLAB installations connected to your RCP and HIL installation, the following applies:

- If an instance of a connected MATLAB installation is running, ConfigurationDesk connects to it, even if this is not the preferred connection.
- If multiple MATLAB instances are running: ConfigurationDesk uses the MATLAB instance that was started first. However, you can connect another running MATLAB instance to ConfigurationDesk by executing a specific API command (from the Model Interface Package for Simulink) in that MATLAB instance.

For details, refer to [Using ConfigurationDesk with MATLAB® \(Model Interface Package for Simulink - Modeling Guide !\[\]\(99f58673407353e96a019fbca558fd72_img.jpg\)](#)).

Basics on Changing the Connection to MATLAB

Motivation

You can change the connection to MATLAB (as well as the integration state) via dSPACE Installation Manager at any time after the initial installation of dSPACE software.

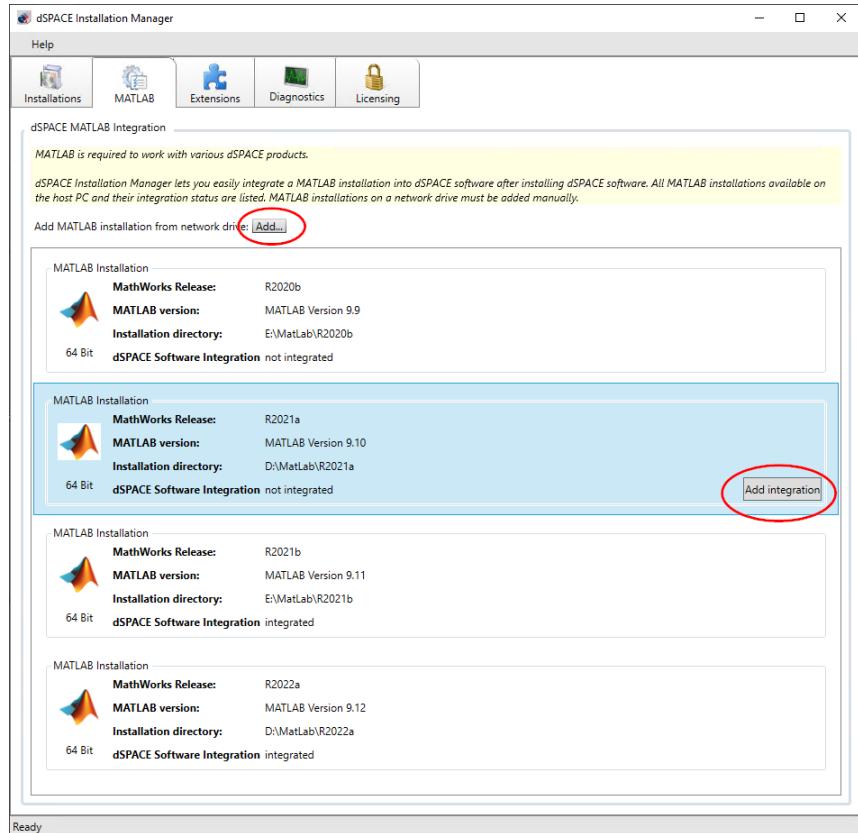
Required user rights and supported actions

Depending on the user rights you have, the following actions are supported:

- You have administrator rights:
 - You can integrate dSPACE software into a MATLAB installation.
 - If you connect a dSPACE installation to a MATLAB installation that is not integrated, the required integration is automatically performed in one step.
 - You can connect a MATLAB installation and set a preferred connection.
- You do not have administrator rights:
 - You can connect a MATLAB installation and set a preferred connection, if the dSPACE software already is integrated.

Changing the integration

To integrate dSPACE software into a MATLAB installation, dSPACE Installation Manager provides the MATLAB page:



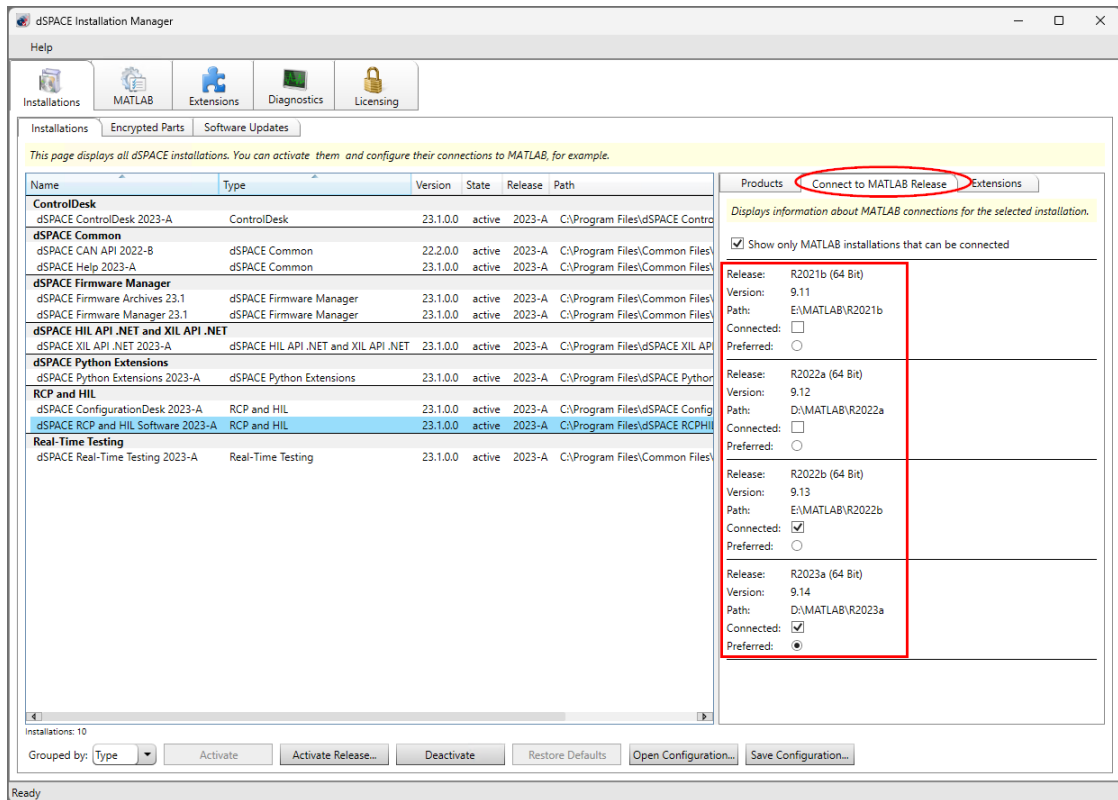
The MATLAB page provides the following features:

- All local MATLAB installations are listed with their installation details and their current integration states.
- You can manually integrate dSPACE software into a MATLAB installation via the Add integration button.
- You can remove all connections between a specific MATLAB installation and multiple dSPACE installations with one click via the Remove integration button.
- You can manually add a MATLAB installation on a network drive to integrate dSPACE software via the Add ... button.
- Error messages showing a failed MATLAB integration are displayed, for example, if you try to integrate dSPACE software that is not compatible with the MATLAB installation.

Changing the connection

To connect a dSPACE installation to a MATLAB installation, dSPACE Installation Manager provides the Connect to MATLAB Release page.

Here, you can connect a MATLAB installation by selecting the Connected checkbox. You also can change the preferred MATLAB installation.



For instructions, refer to [How to Change the MATLAB Connection](#) on page 52.

How to Change the MATLAB Connection

Objective

To change the MATLAB connection, for example, because you installed MATLAB after the initial installation of the dSPACE software, by using dSPACE Installation Manager.

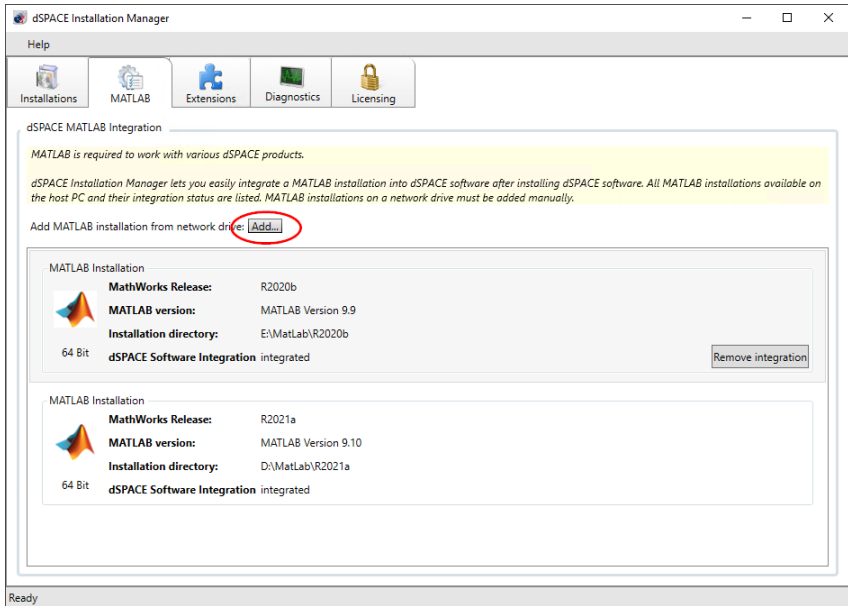
Preconditions

- You have administrator rights: You can connect any compatible MATLAB installation, regardless of the integration state.
- You do not have administrator rights: You can connect only MATLAB installations with integrated dSPACE software.
- A compatible MATLAB installation is available.

Method

To change the MATLAB connection

- 1 From Start – dSPACE Installation Manager, select dSPACE Installation Manager.
dSPACE Installation Manager opens.
- 2 Click the MATLAB tab.
All MATLAB installations installed on your host PC are listed on the MATLAB page.



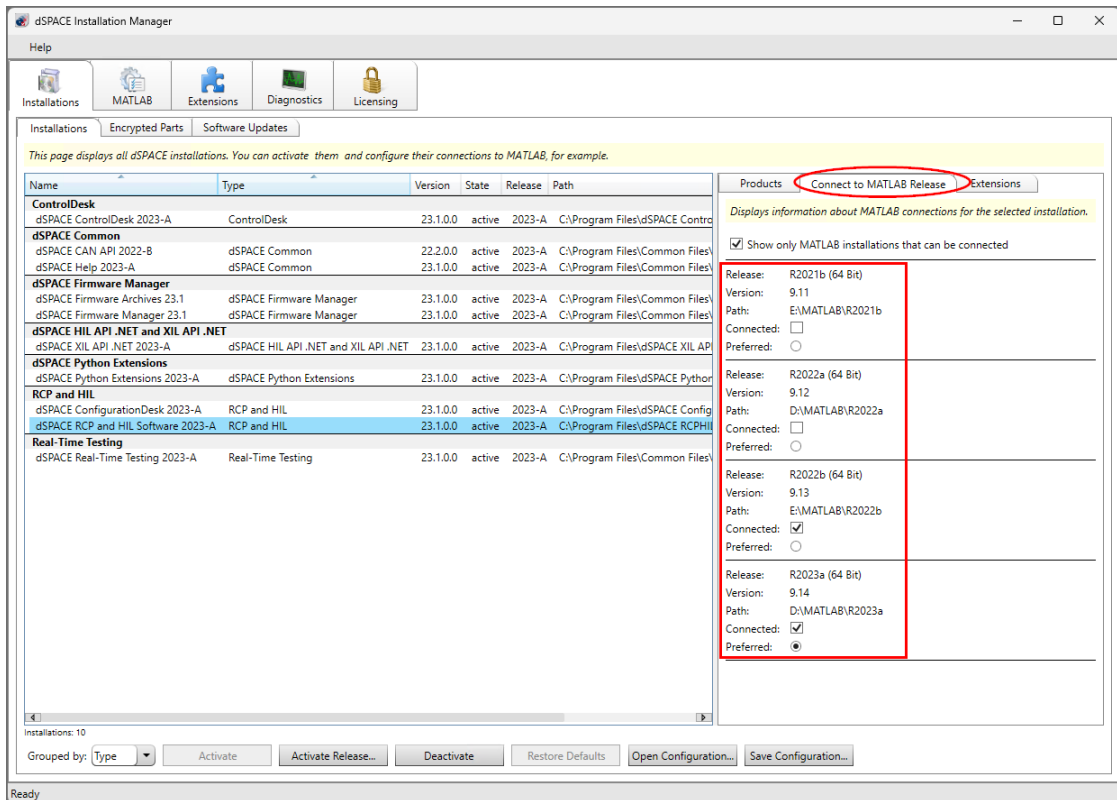
- 3 Check if the MATLAB installation you want to use is listed on the page. If it is not listed but is installed on a network drive, you can add it via the Add ... button.

Tip

MATLAB installations that are installed on a network drive are not listed automatically and must be added manually.

- 4 Click the Installations tab.
- 5 On the Installations page, select the installation you want to connect to a MATLAB installation.

6 Click the Connect to MATLAB Release tab on the right.



7 Select the Connected checkbox of the MATLAB installation you want to connect your dSPACE software to.

To disconnect a MATLAB Release from the selected dSPACE software, clear the checkbox of the respective MATLAB installation.

8 Only for dSPACE software products that require a preferred connection: If you connected multiple MATLAB installations to your dSPACE installation, select one of them as the preferred connection. dSPACE products use the preferred installation as the default, for example, to start MATLAB automatically.

Note

- If you connect only one MATLAB installation, it is automatically the preferred MATLAB installation.
- As of dSPACE Release 2022-A, ConfigurationDesk can also use a MATLAB instance of a connected MATLAB installation that is not configured as a preferred connection in dSPACE Installation Manager.
- ConfigurationDesk connects to MATLAB via the Model interface Package for Simulink, which is part of the RCP and HIL software installation. Refer to [Introduction to Connecting a MATLAB Installation](#) on page 47.

Result

The dSPACE installation is connected to the selected MATLAB installation.

Changing the Configuration of dSPACE Installations via Configuration File

Where to go from here

Information in this section

Basics on Working with Configuration Files	55
Description of the Elements on the Configuration Dialog.....	58

Basics on Working with Configuration Files

Introduction

The dSPACE Installation Manager lets you save the existing configuration of dSPACE installations on the local PC in an XML file. The contents of the file can then be displayed and edited via a specific user dialog. For example, you can change configuration settings, such as activating dSPACE installations or creating MATLAB connections. This modified configuration can then be applied to the local PC.

Features when using a configuration file

A configuration contains all information about available dSPACE installations with their products, patches, hotfixes, and their connections to MATLAB. If you work with a configuration file, you can do the following:

- Activate/deactivate dSPACE installations.
- Add/remove connections between a dSPACE installation and installed MATLAB releases.
- Set a preferred MATLAB connection.
- Display available dSPACE installations on the local PC.
- Display installed dSPACE products, patches, and hotfixes.
- Display the deviations between the content in a specific configuration file and the configuration of the available dSPACE installations on the local PC.

Typical worksteps

These are the typical steps when working with an installation configuration file:

1. Create and save a dSPACE installation configuration file (XML file).
2. Open the configuration file and edit changes in a specific configuration dialog.

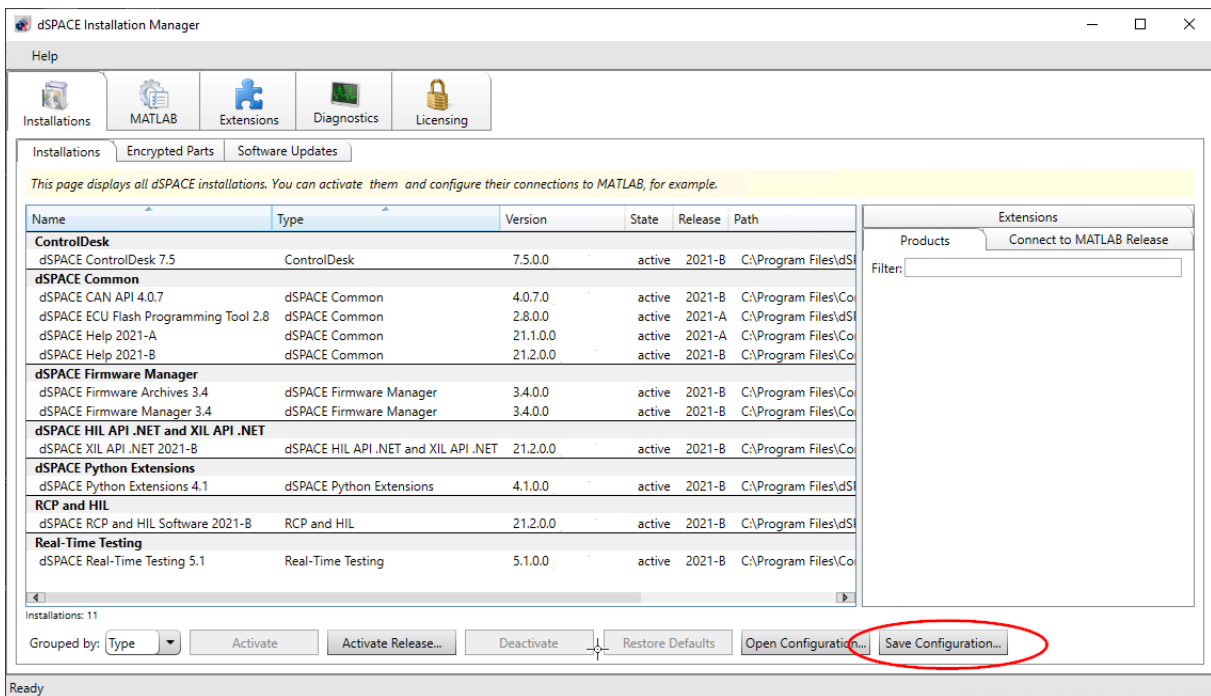
During editing, the deviations between the settings in the dialog (and therefore in the file) and the configuration settings on the local PC are displayed.

3. Apply the configuration changes to the local installations.

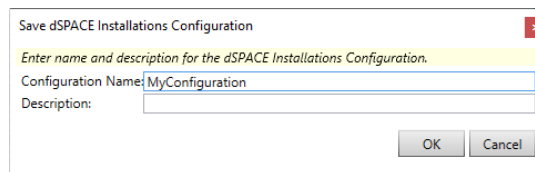
If all changes cannot be applied to the local installation, mainly due to differences caused by incompatible configuration settings in the file, the differences are displayed and you can inspect them.

Creating and saving a configuration file

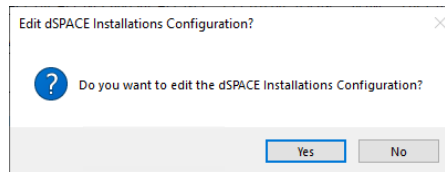
With the Save Configuration button, you can save the configuration of the dSPACE installations on your local PC to a configuration file (XML file). Refer to the following illustration:



Before saving, you can enter a name and description for the configuration. Refer to the following dialog.

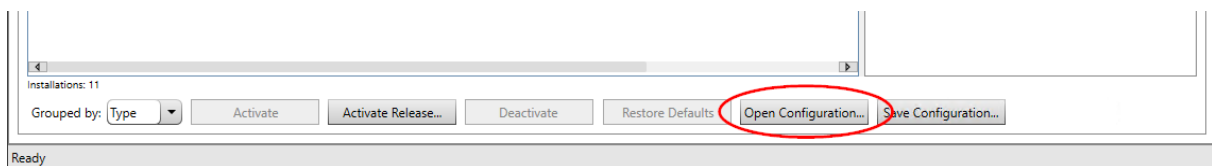


After saving the configuration file in a Save As dialog, you can open the configuration dialog from the following dialog:

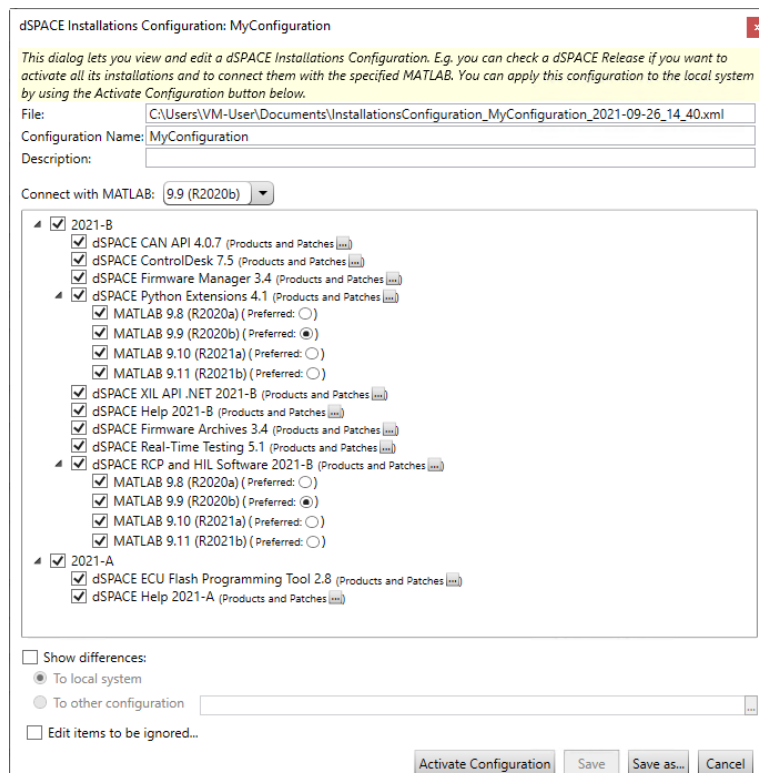


Opening the configuration file and displaying the configuration settings

Clicking the Open Configuration button, opens an Open dialog that can be used to select the XML file to be opened.



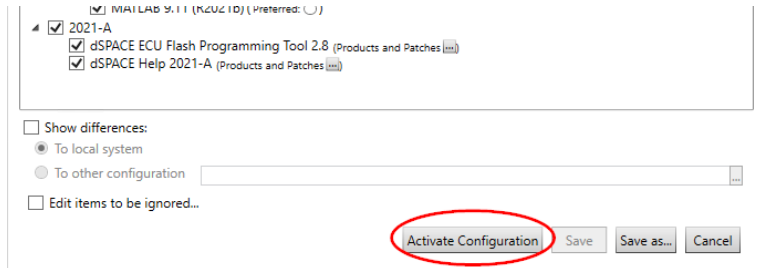
The content of the selected configuration file is displayed in a configuration dialog. Refer to the following example.



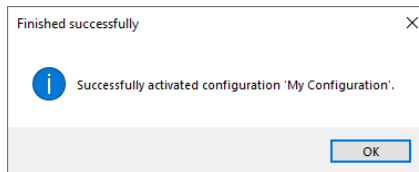
For more details on the elements of the configuration dialog, refer to [Description of the Elements on the Configuration Dialog](#) on page 58.

Applying configuration settings to the local installation

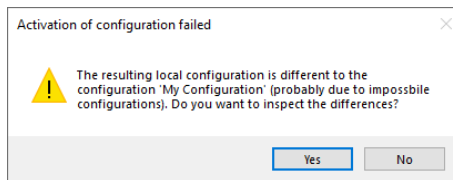
In the configuration dialog, click the Activate Configuration button to apply the settings made in the dialog to the installations on the local PC. Refer to the following screenshot:



According to the configured changes, installations are activated/deactivated, MATLAB connections are added or removed, and preferred MATLAB connections are set. When the update is completed, the following dialog is displayed:



If not all desired configuration changes can be applied on the local installation, the following dialog is displayed:



In this case, you can view the deviations via the configuration dialog and remove the settings that are not applicable.

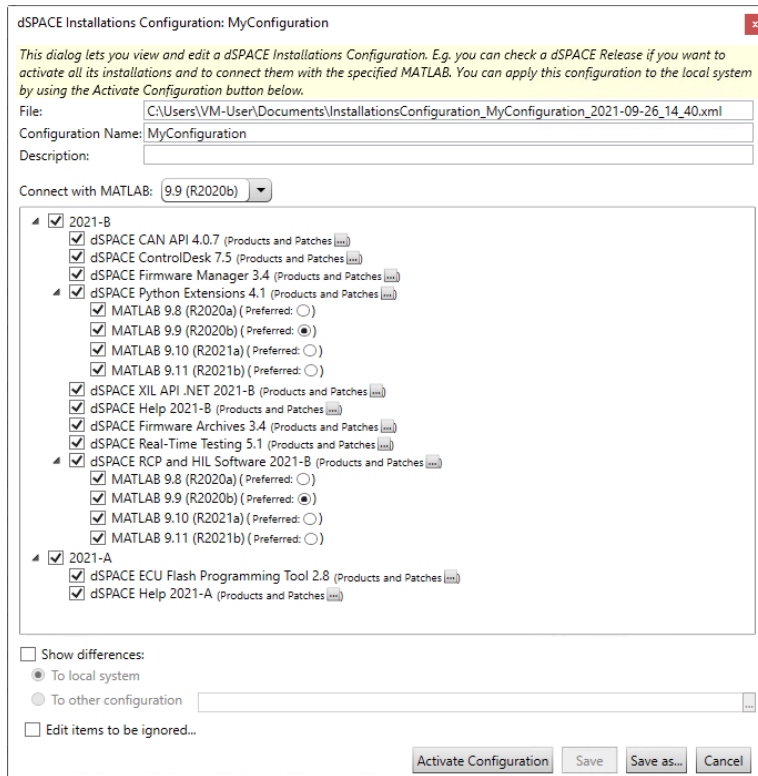
Description of the Elements on the Configuration Dialog

Introduction

The content of a configuration file is displayed in a specific configuration dialog.

Overview

The configuration dialog shows the dSPACE Releases and their installations contained in the configuration file. If a MATLAB installation is required for the dSPACE installation, the available MATLAB installations are also displayed. Refer to the following example:



Selecting dSPACE Releases, installations, and connections to MATLAB

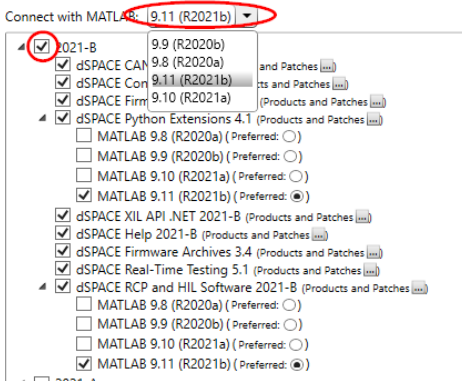
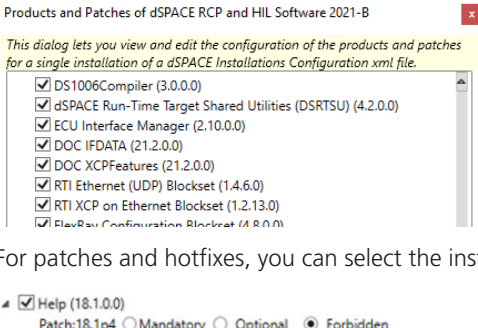
The table below shows the effects on selecting checkboxes for dSPACE Releases, their installations and their connection to MATLAB installations.

Element		Effect of Selecting the Checkboxes
dSPACE Release	<ul style="list-style-type: none"> ▾ <input checked="" type="checkbox"/> 2021-B ▾ <input type="checkbox"/> 2021-A 	<ul style="list-style-type: none"> ▪ Checkbox is selected: All installations of the corresponding dSPACE Release are (or should be) installed and active on the local PC. All installations that require a MATLAB installation are connected with the MATLAB installation, that is selected in the Connect with MATLAB list. ▪ Checkbox is cleared: All installations of the corresponding dSPACE Release are inactive (or should not be) installed on the local PC. None of the installations of the dSPACE Release is (or should be) connected to the selected MATLAB installation.
dSPACE installations	<ul style="list-style-type: none"> <input checked="" type="checkbox"/> dSPACE CAN API 4.0.7 (Products and Patches ...) <input checked="" type="checkbox"/> dSPACE ControlDesk 7.5 (Products and Patches ...) <input checked="" type="checkbox"/> dSPACE Firmware Manager 3.4 (Products and Patches ...) ▾ <input checked="" type="checkbox"/> dSPACE Python Extensions 4.1 (Products and Patches ...) <input checked="" type="checkbox"/> dSPACE XIL API .NET 2021-B (Products and Patches ...) <input checked="" type="checkbox"/> dSPACE Help 2021-B (Products and Patches ...) 	<ul style="list-style-type: none"> ▪ Checkbox is selected: This installation is (or should be) installed and active on the local PC. ▪ Checkbox is cleared: This installation is inactive or not (or should not be) installed on the local PC.
MATLAB installations	<ul style="list-style-type: none"> ▾ <input checked="" type="checkbox"/> dSPACE RCP and HIL Software 2021-B (Products and Patches ...) <ul style="list-style-type: none"> <input type="checkbox"/> MATLAB 9.8 (R2020a) (Preferred: ○) <input type="checkbox"/> MATLAB 9.9 (R2020b) (Preferred: ○) <input type="checkbox"/> MATLAB 9.10 (R2021a) (Preferred: ○) <input checked="" type="checkbox"/> MATLAB 9.11 (R2021b) (Preferred: ●) 	<ul style="list-style-type: none"> ▪ Checkbox is selected: This MATLAB installation is (or should be) connected with the associated dSPACE installation.

Element	Effect of Selecting the Checkboxes
	<ul style="list-style-type: none"> ▪ Checkbox is cleared: This MATLAB installation is not (or should not be) connected with the associated dSPACE installation.

Further elements of the configuration dialog

The configuration dialog provides further elements for editing the configuration:

Element	Description
Configuration Name	Displays a user-defined name and lets you edit the name to identify this configuration among others.
Description	Displays a user-defined description for the configuration and lets you enter a custom description.
Connect with MATLAB	<p>Displays a list with the MATLAB installations contained in the configuration file. If you select a specific MATLAB installation and select the checkbox for a specific dSPACE Release, all installations of this Release will be connected to the selected MATLAB, if this is possible. Refer to the following example:</p> 
Products and Patches	<p>Opens a dialog to display the products and patches of a specific installation. A selected checkbox means that the corresponding product or patch is (or should be) installed and active.</p>  <p>For patches and hotfixes, you can select the installation status as follows:</p>

Element	Description
	<p>The Show differences checkbox lets you check whether the selected item is installed on the local PC or not or whether the item is available in another selected configuraton file or not</p> <div data-bbox="400 380 1396 527" style="background-color: #f0f0f0; padding: 5px;"> <p>Note</p> <p>Keep in mind that it is not possible to install or remove products and patches via configuration file.</p> </div>
Preferred	<p>A selected checkbox sets a MATLAB connection as the preferred one. A preferred connection is the connection that dSPACE products use by default, e.g., when you start MATLAB or generate specific MATLAB files.</p>
Show differences (To local system, To other configurations)	<p>If this checkbox is selected, the deviations between the configuration settings in the configuration dialog and the installations on the local PC or in another selected configuration file are displayed. The following example shows deviations to the installations on the local PC:</p> <div data-bbox="400 772 1118 1291"> </div>
Edit items to be ignored	<p>If this checkbox is selected, Ignore checkboxes are added to each installation entry in the configuration dialog. Refer to the following example:</p> <div data-bbox="400 1436 1118 1801"> </div> <p>The Ignore checkboxes let you select the items, for example, installations, a to be ignored when applying configuration changes on the local system. The selected items are also ignored when you display differences to the installations on the local PC.</p>

Element	Description
	Ignored items are displayed in gray color. This status remains even if you clear the Edit items to be ignored checkbox.
Activate configuration	Applies the settings made in the configuration dialog to the installations on the local PC.
Save, Save as	Saves the settings made in the configuration dialog to an existing or a new configuration file.

Automating dSPACE Installation Manager via the API

Introduction to the dSPACE Installation Manager API

Objective

dSPACE Installation Manager provides an API to automate various features of dSPACE Installation Manager.

API features

The API of dSPACE Installation Manager provides access to the following features:

- Getting information on the dSPACE installations on your host PC.
- Getting information on MATLAB installations (on your host PC and on a network drive) and their connection state.
- As of dSPACE Installation Manager 4.0:
 - Activating and deactivating dSPACE installations.
 - Adding and removing the integration of dSPACE software into a specific MATLAB installation.
 - Modifying the connection to a MATLAB installation, for example, connecting another MATLAB installation and setting it as the preferred one.
- As of dSPACE Installation Manager 5.0:
 - Decrypting encrypted archives of the installed dSPACE software.
- As of dSPACE Installation Manager 5.2:
 - Collecting information about the dSPACE software environment on your PC and the problem you may have and saves it to a ZIP file. This you can send to the dSPACE Support for diagnostic purposes.
- As of dSPACE Installation Manager 5.3:
 - Activating/deactivating dSPACE installations and decrypting archives of the installed dSPACE software can be executed via Python scripts.
- As of dSPACE Installation Manager 5.8:
 - License management functions are supported, for example, license activation, license updating, and license borrowing.

- As of dSPACE Installation Manager 22.2:
 - Get information on available dSPACE software updates.

More information

For a description of the API, refer to [dSPACE Installation Manager API Reference for Windows](#) .

A

- activating a single dSPACE installation 42
- activating all dSPACE installations in one step 43
- activation rules 39
- available software updates 21

C

- changing configuration of installations via file 55
- changing the MATLAB connection 52
- Common Program Data folder 6
- connecting dSPACE Installation to MATLAB 47

D

- decryption 31
 - state 33
- Documents folder 6
- dSPACE Installation Manager
 - API 63
 - working with 7
- dSPACE installations
 - changing configuration via file 55

G

- getting diagnostic information 9
- getting information on available software updates 21

L

- Local Program Data folder 6

M

- managing licenses 9

R

- restricted mode 9

S

- showing installation details 8
- software updates 21

U

- user rights 9

V

- viewing dSPACE extensions 18
- viewing installation details 15

W

- working with
 - dSPACE Installation Manager 7

